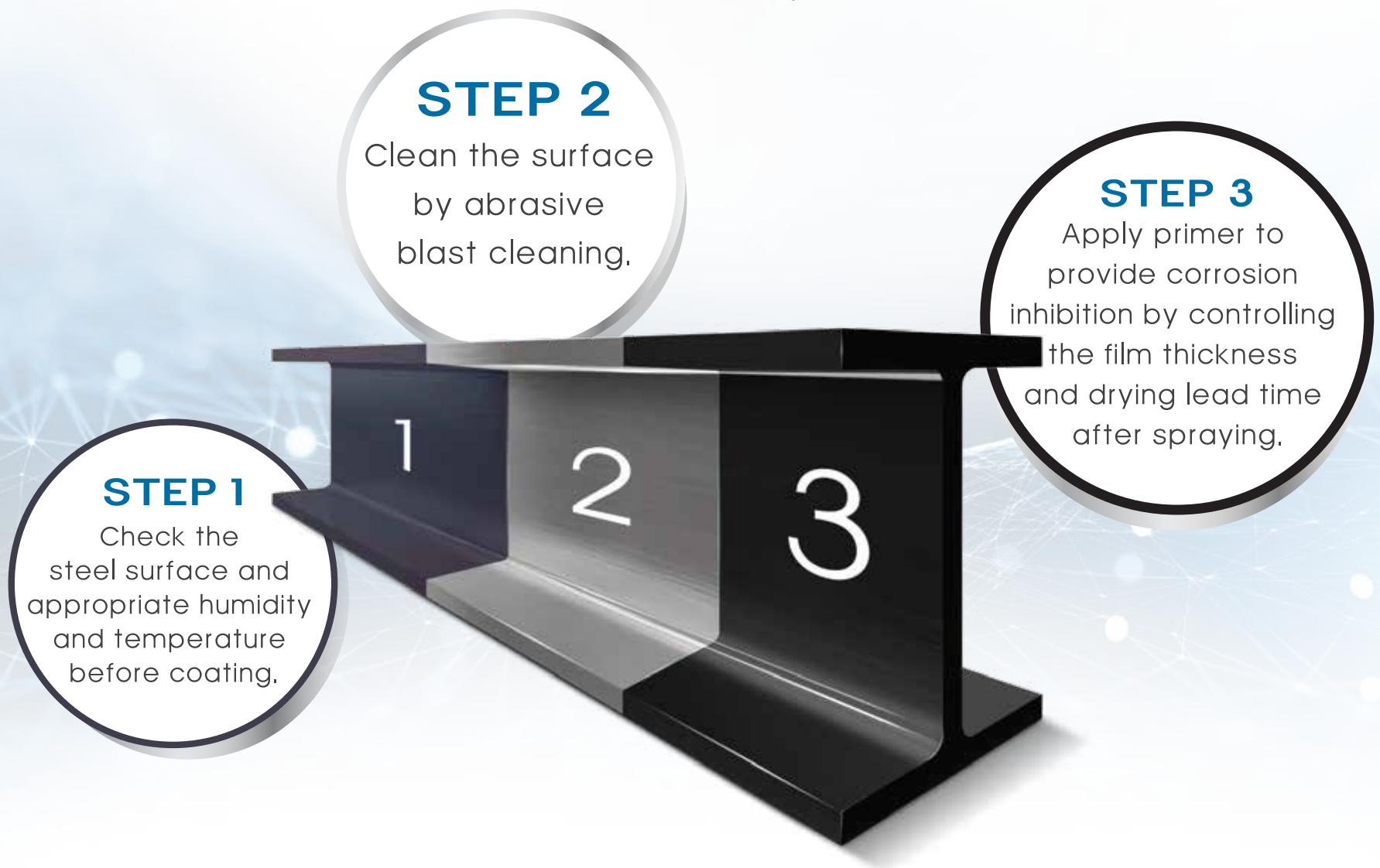


What's SYS PRIMERBOND ?

SYS structural steel that boasts
an international standard corrosion protection system
with three steps :

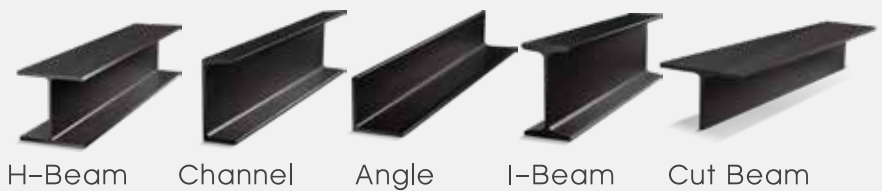


"Change" for better structural steelwork

- Extend the service life of a structure
- Reduce work procedures
- Controllable budget

Certificate of quality assurance for every step



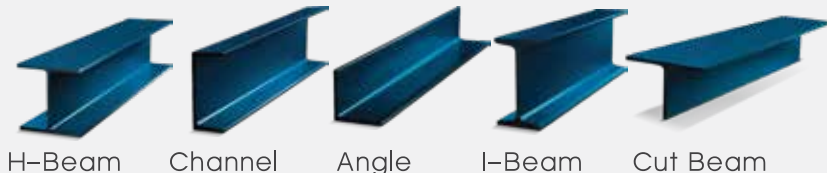
SYS PRIMERBOND**STANDARD SERIES**

The high quality surface preparation with special formulated alkyd primer culminates in the excellent resistance of SYS PRIMERBOND : Standard Version to seawater, oil, mild acid, and heat. It can be overcoated with different types of paint such as alkyd, epoxy and polyurethane. Ideal for the construction of government buildings or public buildings that demand a paint service life of more than 10 years.

Product Specifications :

Model	: Standard
Color	: Black
SYS Steel	: H-Beam, Channel, Angle, I-Beam TIS 1227-2558(2015) Cut Beam (Cutting service is available upon request)
Surface Preparation	: Blast cleaning grade Sa2.5 (Comply with ISO 8501-1 Standard)
Primer	: Dry Film Thickness (D.F.T.) 80 micron
Application	: Government buildings or public building demanding a pint service life of more than 10 years.

Remarks : The actual black color primer will be close to the sample picture.

SYS PRIMERBOND**PREMIUM SERIES**

SYS PRIMERBOND Premium Version does surface preparation with special epoxy paint. Highly resistant to impact and abrasion, the formed color film also features maximum strength as well as high performance bonding and resistance to oil, water, and seawater. It can be overcoated with different types of paint such as epoxy and polyurethane. Ideal for structures adjacent to marine environments or structures demanding long service life of paint due to difficult access to paint maintenance.

Product Specifications :

Model	: Premium
Color	: Blue
SYS Steel	: H-Beam, Channel, Angle, I-Beam TIS 1227-2558(2015) Cut Beam (Cutting service is available upon request)
Surface Preparation	: Blast cleaning grade Sa2.5 (Comply with ISO 8501-1 Standard)
Primer	: Dry Film Thickness (D.F.T.) 100 micron
Application	: Structures adjacent to marine environments or structure demanding long paint service life due to difficult access to paint maintenance

Remarks : The actual blue color primer will be close to the sample picture.



SIAM YAMATO STEEL

SIAM YAMATO STEEL Co., Ltd (SYS)

1 Siam Cement Road, Bang Sue, Bangkok 10800, Thailand
SYS Call Center (66) 2586 7777 **แวนซ์** (66) 2586 7687

✉ sys@syssteel.com [@syssteel](https://www.facebook.com/syssteel)


www.syssteel.com