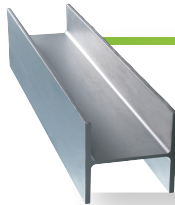


INSTRUCTION MANUAL

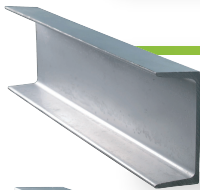
Applications of Hot-Rolled Structural Steel

Hot-rolled structural steel is commonly used to assemble structures in buildings, infrastructure and other small structures such as



H-BEAM

Use as Constuction work pillar,
Beam and truss structure.



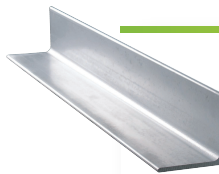
CHANNEL

Use as part of stair purin



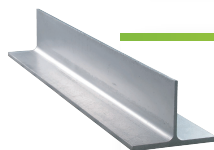
I-BEAM

Use as groove crane



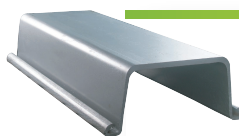
ANGLE

Use as the Construction of
transmission line tower
and telecom towers



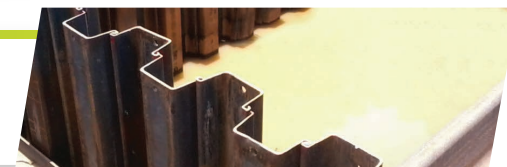
CUT-BEAM

Use as truss



SHEET PILE

Use as the Construction of
retaining walls for sail erosion
and run off prevention



Hot rolled structural steel can be installed by 2 methods, which are “Bolted connection”, and “welded” connection. Steel sheet pile can be installed by various piling system, such as, Vibro Hammer Pile Driver, and Silent Piler.

The usage of each type of product and size, including quality classes, depends on the design load and the suitability of the structural steel types.

The characteristics of hot-rolled structural steel for resisting loads conforming to the structural steel's quality class and according to standards are specified in various standards.

As an example, hot-rolled structural steel BS EN 10025-2 : 2004 grade S275JR has a yield strength of 235N/mm² (yield point) and can resist the highest tensile strength in the range of 400-510 N/mm².

INSTRUCTION MANUAL

Safety Instructions

INSTRUCTIONS

Safe Storage Guidelines:

- The product should be placed in the same line as the sleepers for support.
- Arrange the product in a tidy manner and ensure that the tips of the product are level and aligned.
- Do not arrange the product at an angle; if needed, use equipment such as wood to level it out.
- The floor must be sturdy and capable of supporting the weight of the goods to be stored.



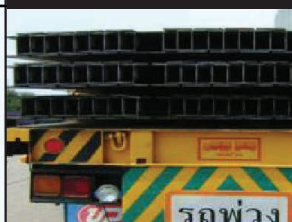
Arrange the product tidy



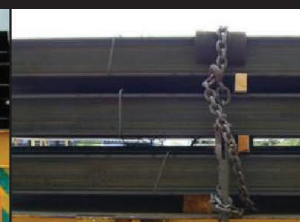
Support are placed in the same line as the sleepers.

Safe Carriage Guidelines:

- Keep the product in the middle of the vehicle with no tilted while transporting.
- Using a support material such as a rubber pad to assist. Using hook and chain more than 10 mm. for fastening to make it tight strong enough.
- Tighten at least 2 chains (top and end both)



Arrange the product without tilted



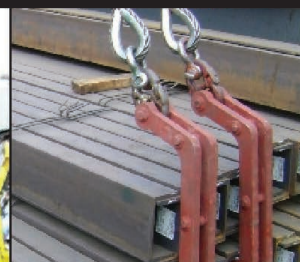
Using support material and fastening tools to tight products

Safe Handling Guidelines:

- The product should not weigh more than 6 tons per bundle while carrying.
- Always check the machine and wire tying for readiness before use. Use a lifting machine appropriate for the products being lifted.
- Wear appropriate safety equipment, such as safety gloves and safety shoes.
- ⚠ Do not sit or stand in the lifting area while the products are being lifted.
- ⚠ If standing on the products is necessary for convenience when carrying, be careful of slippery surfaces.
- ⚠ Note that wire tying is not designed to carry the weight of the products to be lifted.



Check the carrying weight of the forklift before lifting and carry at the middle of bundle



Use qualifying lifting equipment.



Cautions

- ⚠ Be aware of the potential dangers from sparks, heat, electricity, and dust while working with steel, such as cutting, grinding, drilling holes, welding steel, or other related operations. Those who operate the equipment must wear appropriate protective equipment in accordance with safety regulations.
- ⚠ When stocking products either inside or outside, ensure that the storage area has sufficient load capacity and is vibration-resistant to keep the products safe.
- ⚠ If the storage area is located near a passageway, there must be a sign or warning prominently displayed to alert commuters and ensure their safety.
- ⚠ Moving, lifting, and installing steel products in different locations requires equipment and lifting methods that meet safety standards.



Precautions

The above instruction is just a suggestion for general usage only.
The user has direct responsibility for any operations not described in the instruction manual.