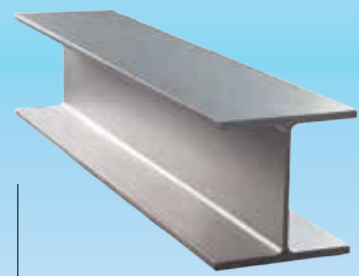
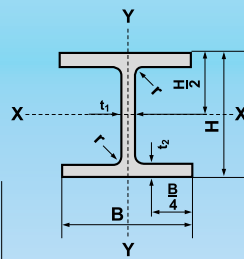


UNIVERSAL BEAMS



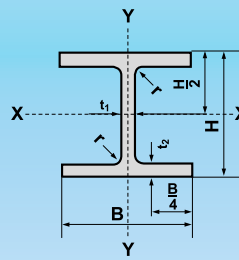
BS 4-1 : 2005 BS STANDARD

Nominal Size	Weight		Sectional Dimension										Sectional Area
			H		B		t ₁		t ₂		r		
mmxmmxkg/m	kg/m	lb/ft	mm	in	mm	in	mm	in	mm	in	mm	in	cm ²
203x102x23	23.1	15	203.2	8.00	101.8	4.008	5.4	0.21	9.3	0.37	7.6	0.3	29.4
203x133x25	25.1	17	203.2	8.00	133.2	5.244	5.7	0.22	7.8	0.31	7.6	0.3	32.0
x30	30.0	20	206.8	8.14	133.9	5.272	6.4	0.25	9.6	0.38	7.6	0.3	38.2
254x102x22	22.0	15	254.0	10.00	101.6	4.000	5.7	0.21	6.8	0.27	7.6	0.3	28
x25	25.2	17	257.2	10.13	101.9	4.012	6.0	0.24	8.4	0.33	7.6	0.3	32.0
x28	28.3	19	260.4	10.25	102.2	4.024	6.3	0.25	10.0	0.39	7.6	0.3	36.1
254x146x31	31.1	21	251.4	9.90	146.1	5.752	6.0	0.24	8.6	0.34	7.6	0.3	39.7
x37	37.0	25	256.0	10.08	146.4	5.764	6.3	0.25	10.9	0.43	7.6	0.3	47.2
x43	43.0	29	259.6	10.22	147.3	5.799	7.2	0.28	12.7	0.50	7.6	0.3	54.8
305x102x25	25.0	17	304.8	11.99	101.6	3.993	5.8	0.23	6.8	0.27	7.6	0.3	31.4
x28	28.0	19	308.9	12.14	101.9	4.005	6.1	0.24	8.9	0.35	7.6	0.3	36.3
x33	33.0	22	312.7	12.29	102.4	4.024	6.6	0.26	10.8	0.42	7.6	0.3	41.8
305x165x40	40.3	27	303.4	11.94	165.0	6.496	6.1	0.24	10.2	0.40	8.9	0.4	51.3
x46	46.1	31	306.6	12.07	165.7	6.524	6.7	0.26	11.8	0.46	8.9	0.4	58.7
x54	54.0	36	310.4	12.22	166.9	6.571	7.9	0.31	13.7	0.54	8.9	0.4	68.8
356x127x33	33.1	22	349.0	13.74	125.4	4.937	6.0	0.24	8.5	0.33	10.2	0.4	42.1
x39	39.1	26	353.4	13.91	126.0	4.961	6.6	0.26	10.7	0.42	10.2	0.4	49.8
356x171x45	45.0	30	351.4	13.83	171.1	6.736	7.0	0.28	9.7	0.38	10.2	0.4	57.3
x51	51.0	34	355.0	13.98	171.5	6.752	7.4	0.29	11.5	0.45	10.2	0.4	64.9
x57	57.0	38	358.0	14.09	172.2	6.780	8.1	0.31	13.0	0.51	10.2	0.4	72.6
x67	67.1	45	363.4	14.31	173.2	6.819	9.1	0.36	15.7	0.62	10.2	0.4	85.5
406x140x39	39.0	26	398.0	15.67	141.8	5.583	6.4	0.25	8.6	0.34	10.2	0.4	49.7
x46	46.0	31	403.2	15.87	142.2	5.598	6.8	0.27	11.2	0.44	10.2	0.4	58.6
406x178x54	54.1	36	402.6	15.85	177.7	6.996	7.7	0.30	10.9	0.43	10.2	0.4	69.0
x60	60.1	40	406.4	16.00	177.9	7.004	7.9	0.31	12.8	0.50	10.2	0.4	76.5
x67	67.1	45	409.4	16.12	178.8	7.039	8.8	0.31	14.3	0.56	10.2	0.4	85.5
x74	74.2	50	412.8	16.25	179.5	7.067	9.5	0.37	16.0	0.63	10.2	0.4	94.5
457x152x52	52.3	35	449.8	17.71	152.4	6.000	7.6	0.30	10.9	0.43	10.2	0.4	66.6
x60	59.8	40	454.6	17.90	152.9	6.020	8.1	0.32	13.3	0.52	10.2	0.4	76.2
x67	67.2	45	458.0	18.03	153.8	6.055	9.0	0.35	15.0	0.59	10.2	0.4	85.6
x74	74.2	50	462.0	18.19	154.4	6.079	9.6	0.38	17.0	0.67	10.2	0.4	94.5
x82	82.1	55	465.8	18.34	155.3	6.114	10.5	0.41	18.9	0.74	10.2	0.4	105.0
457x191x67	67.1	45	453.4	17.85	189.9	7.476	8.5	0.33	12.7	0.50	10.2	0.4	85.5
x74	74.3	50	457.0	17.99	190.4	7.496	9.0	0.35	14.5	0.57	10.2	0.4	94.6
x82	82.0	55	460.0	18.11	191.3	7.531	9.9	0.39	16.0	0.63	10.2	0.4	104.0
x89	89.3	60	463.4	18.24	191.9	7.555	10.5	0.41	17.7	0.70	10.2	0.4	114.0
x98	98.3	66	467.2	18.39	192.8	7.591	11.4	0.45	19.6	0.77	10.2	0.4	125.0
533x210x82	82.2	55	528.3	20.80	208.8	8.220	9.6	0.38	13.2	0.52	12.7	0.5	105.0
x92	92.1	62	533.1	20.99	209.3	8.240	10.1	0.40	15.6	0.61	12.7	0.5	117.0
x101	101.0	68	536.7	21.13	210.0	8.268	10.8	0.43	17.4	0.69	12.7	0.5	129.0
x109	109.0	73	539.5	21.24	210.8	8.299	11.6	0.46	18.8	0.74	12.7	0.5	139.0
x122	122.0	82	544.5	21.44	211.9	8.343	12.7	0.50	21.3	0.84	12.7	0.5	155.0
610x229x101	101.2	68	602.6	23.72	227.6	8.961	10.5	0.41	14.8	0.58	12.7	0.5	129.0
x113	113.0	76	607.6	23.92	228.2	8.984	11.1	0.44	17.3	0.68	12.7	0.5	144.0
x125	125.1	84	612.2	24.10	229.0	9.016	11.9	0.47	19.6	0.77	12.7	0.5	159.0
x140	139.9	94	617.2	24.30	230.2	9.063	13.1	0.52	22.1	0.87	12.7	0.5	178.0
610x305x149	149.1	100	612.4	24.11	304.8	12.000	11.8	0.46	19.7	0.78	16.5	0.7	190.1
x179	179.0	120	620.2	24.42	307.1	12.091	14.1	0.56	23.6	0.93	16.5	0.7	227.9
x238	238.1	160	635.8	25.03	311.4	12.260	18.4	0.72	31.4	1.24	16.5	0.7	303.8
686x254x125	125.2	84	677.9	26.69	253.0	9.961	11.7	0.46	16.2	0.64	15.2	0.6	159.0
x140	140.1	94	683.5	26.91	253.7	9.988	12.4	0.49	19.0	0.75	15.2	0.6	178.0
x152	152.4	102	687.5	27.07	254.5	10.020	13.2	0.52	21.0	0.83	15.2	0.6	194.0
x170	170.2	114	692.9	27.28	255.8	10.071	14.5	0.57	23.7	0.93	15.2	0.6	217.0

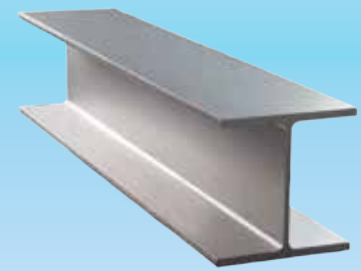
Note

- The Hot-rolled sections listed in this table are rolled at specific intervals determined by Siam Yamato Steel.
- Contact us for product availability, rolling frequency and other pertinent information.

UNIVERSAL BEAMS



BS 4-1 : 2005



BS STANDARD

Sectional Area	Moment of Inertia				Radius of Gyration				Modulus of Section				Nominal Size
	I_x	I_y	i_x	i_y	Z_x	Z_y	Z_x	Z_y					
in ²	cm ⁴	in ⁴	cm ⁴	in ⁴	cm	in	cm	in	cm ³	in ³	cm ³	in ³	mmxmmxkg/m
4.56	2,105	51	164	3.9	8.46	3.33	2.36	0.93	207	12.63	32	1.96	203x102x23
4.96	2,340	56	308	7.4	8.56	3.37	3.10	1.22	230	14.04	46	2.82	203x133x25
5.92	2,896	70	385	9.2	8.71	3.43	3.17	1.25	280	17.09	58	3.51	x30
4.34	2,841	68	119	2.9	10.10	3.98	2.06	0.81	224	13.67	23	1.40	254x102x22
4.96	3,415	82	149	3.6	10.30	4.06	2.15	0.85	266	16.23	29	1.78	x25
5.60	4,005	96	179	4.3	10.50	4.13	2.22	0.87	308	18.80	35	2.13	x28
6.15	4,413	106	448	10.8	10.50	4.13	3.36	1.32	351	21.42	61	3.74	254x146x31
7.32	5,537	133	571	13.7	10.80	4.25	3.48	1.37	433	26.42	78	4.76	x37
8.49	6,544	157	677	16.3	10.90	4.29	3.52	1.39	504	30.76	92	5.61	x43
4.87	4,387	105	120	2.9	11.82	4.65	1.96	0.77	288	17.57	24	1.46	305x102x25
5.63	5,421	130	157	3.8	12.22	4.81	2.08	0.82	351	21.42	31	1.89	x28
6.46	6,487	156	193	4.6	12.46	4.91	2.15	0.85	415	25.32	38	2.32	x33
7.95	8,503	204	764	18.4	12.90	5.08	3.86	1.52	560	34.17	93	5.65	305x165x40
9.10	9,899	238	896	21.5	13.00	5.12	3.90	1.54	646	39.42	108	6.59	x46
10.66	11,700	281	1,063	25.5	13.00	5.12	3.93	1.55	754	46.01	127	7.75	x54
6.53	8,249	198	280	6.7	14.00	5.51	2.58	1.02	473	28.86	45	2.73	356x127x33
7.72	10,170	244	358	8.6	14.30	5.63	2.68	1.06	576	35.15	57	3.47	x39
8.88	12,070	290	811	19.5	14.50	5.71	3.76	1.48	687	41.92	95	5.79	356x171x45
10.06	14,140	340	968	23.3	14.80	5.83	3.86	1.52	796	48.57	113	6.90	x51
11.25	16,040	385	1,108	26.6	14.90	5.87	3.91	1.54	896	54.68	129	7.87	x57
13.25	19,460	468	1,362	32.7	15.10	5.94	3.99	1.57	1,071	65.36	157	9.58	x67
7.70	12,510	301	410	9.9	15.90	6.26	2.87	1.13	629	38.38	58	3.53	406x140x39
9.08	15,690	377	538	12.9	16.40	6.46	3.03	1.19	778	47.48	76	4.62	x46
10.70	18,720	450	1,021	24.5	16.50	6.50	3.85	1.52	930	56.75	115	7.02	406x178x54
11.86	21,600	519	1,203	28.9	16.80	6.61	3.97	1.56	1,063	64.87	135	8.24	x60
13.25	24,330	585	1,365	32.8	16.90	6.65	3.99	1.57	1,189	72.56	153	9.34	x67
14.65	27,310	656	1,545	37.1	17.00	6.69	4.04	1.59	1,323	80.73	172	10.50	x74
10.32	21,370	513	645	15.5	17.90	7.05	3.11	1.22	950	57.97	85	5.16	457x152x52
11.81	25,500	613	795	19.1	18.30	7.20	3.23	1.27	1,122	68.47	104	6.35	x60
13.27	28,930	695	913	21.9	18.40	7.24	3.27	1.29	1,263	77.07	119	7.26	x67
14.65	32,670	785	1,047	25.2	18.60	7.32	3.33	1.31	1,414	86.29	136	8.30	x74
16.28	36,590	879	1,185	28.5	18.70	7.36	3.37	1.33	1,571	95.87	153	9.34	x82
13.25	29,380	706	1,452	34.9	18.50	7.28	4.12	1.62	1,296	79.09	153	9.34	457x191x67
14.66	33,320	801	1,671	40.1	18.80	7.40	4.20	1.65	1,458	88.97	176	10.74	x74
16.12	37,050	890	1,871	45.0	18.80	7.40	4.23	1.67	1,611	98.31	196	11.96	x82
17.67	41,020	986	2,089	50.2	19.00	7.48	4.29	1.69	1,770	108.01	218	13.30	x89
19.38	45,730	1,099	2,347	56.4	19.10	7.52	4.33	1.70	1,957	119.42	243	14.83	x98
16.28	47,540	1,142	2,007	48.2	21.30	8.39	4.38	1.72	1,800	109.84	192	11.72	533x210x82
18.14	55,230	1,327	2,389	57.4	21.70	8.54	4.51	1.78	2,072	126.44	228	13.91	x92
20.00	61,520	1,478	2,692	64.7	21.90	8.62	4.57	1.80	2,292	139.87	256	15.62	x101
21.55	66,820	1,605	2,943	70.7	21.90	8.62	4.60	1.81	2,477	151.16	279	17.03	x109
24.03	76,040	1,827	3,388	81.4	22.10	8.70	4.67	1.84	2,793	170.44	320	19.53	x122
20.00	75,780	1,821	2,915	70.0	24.20	9.53	4.75	1.87	2,515	153.47	256	15.62	610x229x101
22.32	87,320	2,098	3,434	82.5	24.60	9.69	4.88	1.92	2,874	175.38	301	18.37	x113
24.65	98,610	2,369	3,932	94.5	24.90	9.80	4.97	1.96	3,221	196.56	343	20.93	x125
27.59	111,800	2,686	4,505	108.2	25.00	9.84	5.03	1.98	3,622	221.03	391	23.86	x140
29.47	125,900	3,025	9,308	223.6	25.70	10.12	7.00	2.76	4,111	250.87	611	37.29	610x305x149
35.32	153,000	3,676	11,410	274.1	25.90	10.20	7.07	2.78	4,935	301.15	743	45.34	x179
47.00	207,571	4,986	15,838	380.5	26.10	10.28	7.22	2.84	6,599	400.20	1,017	62.00	x238
24.65	118,000	2,835	4,383	105.3	27.20	10.71	5.24	2.06	3,481	212.42	346	21.11	686x254x125
27.59	136,300	3,275	5,183	124.5	27.60	10.87	5.39	2.12	3,987	243.30	409	24.96	x140
30.07	150,400	3,613	5,784	139.0	27.80	10.94	5.46	2.15	4,374	266.92	455	27.77	x152
33.64	170,300	4,091	6,630	159.3	28.00	11.02	5.53	2.18	4,916	299.99	518	31.61	x170

Note

- The Hot-rolled sections listed in this table are rolled at specific intervals determined by Siam Yamato Steel.
- Contact us for product availability, rolling frequency and other pertinent information.

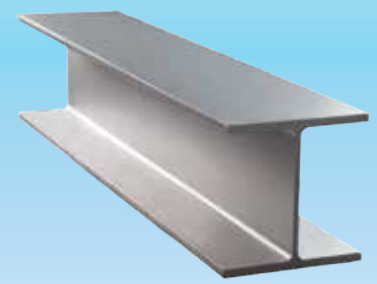
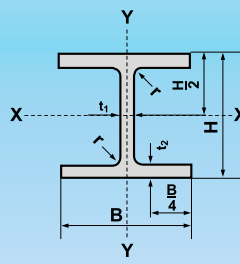


SIAM YAMATO STEEL CO., LTD.

1 Siam Cement Road, Bangsue,
Bangkok, 10800, Thailand
Tel : (662) 586-7777
Fax : (662) 586-2687
www.syssteel.com



UNIVERSAL BEAMS



BS 4-1 : 2005

BS STANDARD

Nominal Size	Weight		Sectional Dimension										Sectional Area
	kg/m	lb/ft	H		B		t ₁		t ₂		r		
mmxmmxkg/m	kg/m	lb/ft	mm	in	mm	in	mm	in	mm	in	mm	in	cm ²
762x267x134	133.9	90	750.0	29.53	264.4	10.409	12.0	0.47	15.5	0.61	16.5	0.6	171.0
x147	146.9	99	754.0	29.69	265.2	10.441	12.8	0.50	17.5	0.69	16.5	0.6	187.0
x173	173.0	116	762.2	30.01	266.7	10.500	14.3	0.56	21.6	0.85	16.5	0.6	220.0
x197	196.8	132	769.8	30.31	268.0	10.551	15.6	0.61	25.4	1.00	16.5	0.6	251.0
838x292x176	175.9	118	834.9	32.87	291.7	11.484	14.0	0.55	18.8	0.74	17.8	0.7	224.0
x194	193.8	130	840.7	33.10	292.4	11.512	14.7	0.58	21.7	0.85	17.8	0.7	247.0
x226	226.5	152	850.9	33.50	293.8	11.567	16.1	0.63	26.8	1.06	17.8	0.7	289.0

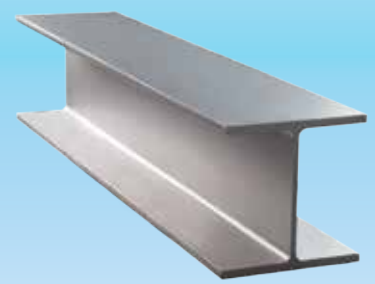
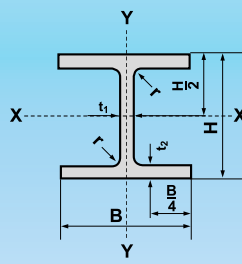
UNIVERSAL COLUMNS

Nominal Size	Weight		Sectional Dimension										Sectional Area
	kg/m	lb/ft	H		B		t ₁		t ₂		r		
mmxmmxkg/m	kg/m	lb/ft	mm	in	mm	in	mm	in	mm	in	mm	in	cm ²
152x152x23	23.0	16	152.4	6.00	152.2	5.992	5.8	0.228	6.8	0.268	7.6	0.3	29.2
x30	30.0	20	157.6	6.20	152.9	6.020	6.5	0.256	9.4	0.370	7.6	0.3	38.3
x37	37.0	25	161.8	6.37	154.4	6.079	8.0	0.315	11.5	0.453	7.6	0.3	47.1
203x203x46	46.1	31	203.2	8.00	203.6	8.016	7.2	0.283	11.0	0.433	10.2	0.4	58.8
x52	52.0	35	206.2	8.12	204.3	8.043	7.9	0.311	12.5	0.492	10.2	0.4	66.3
x60	60.0	40	209.6	8.25	205.8	8.012	9.4	0.370	14.2	0.559	10.2	0.4	76.4
x71	71.0	48	215.8	8.50	206.4	8.126	10.0	0.394	17.3	0.681	10.2	0.4	90.4
x86	86.1	58	222.2	8.75	209.1	8.232	12.7	0.500	20.5	0.807	10.2	0.4	110.0
254x254x73	73.1	49	254.1	10.00	254.6	10.024	8.6	0.399	14.2	0.559	12.7	0.5	93.1
x89	88.9	60	260.3	10.25	256.3	10.091	10.3	0.406	17.3	0.681	12.7	0.5	113.0
x107	107.1	72	266.7	10.50	258.8	10.189	12.8	0.504	20.5	0.807	12.7	0.5	136.0
x132	132.0	89	276.3	10.88	261.3	10.287	15.3	0.602	25.3	0.996	12.7	0.5	168.0
x167	167.1	112	289.1	11.38	265.2	10.441	19.2	0.755	31.7	1.250	12.7	0.5	213.0
305x305x97	96.9	65	307.9	12.12	305.3	12.020	9.9	0.390	15.4	0.606	15.2	0.6	123.0
x118	117.9	79	314.5	12.38	307.4	12.102	12.0	0.472	18.7	0.736	15.2	0.6	150.0
x137	136.9	92	320.5	12.62	309.2	12.173	13.8	0.543	21.7	0.854	15.2	0.6	174.0
x158	158.1	106	327.1	12.88	311.2	12.252	15.8	0.622	25.0	0.984	15.2	0.6	201.0
x198	198.1	133	339.9	13.38	314.5	12.382	19.1	0.752	31.4	1.236	15.2	0.6	252.0
x240	240.0	161	352.5	13.88	318.4	12.535	23.0	0.906	37.7	1.484	15.2	0.6	306.0
x283	282.9	190	365.3	14.38	322.2	12.685	26.8	1.055	44.1	1.736	15.2	0.6	360.0
356x368x129	129.0	87	355.6	14.00	368.6	14.512	10.4	0.409	17.5	0.689	15.2	0.6	164.0
x153	152.9	103	362.0	14.25	370.5	14.587	12.3	0.484	20.7	0.815	15.2	0.6	195.0
x177	177.0	119	368.2	14.50	372.6	14.669	14.4	0.567	23.8	0.937	15.2	0.6	226.0
x202	201.9	136	374.6	14.75	374.7	14.752	16.5	0.650	27.0	1.063	15.2	0.6	257.0
356x406x235	235.1	158	381.0	14.97	394.8	15.516	18.4	0.723	30.2	1.187	15.2	0.6	299.8

Note

- The Hot-rolled sections listed in this table are rolled at specific intervals determined by Siam Yamato Steel.
- Contact us for product availability, rolling frequency and other pertinent information.

UNIVERSAL BEAMS



BS 4-1 : 2005

BS STANDARD

Sectional Area	Moment of Inertia				Radius of Gyration				Modulus of Section				Nominal Size
	I_x	I_y	I_x	I_y	r_x	r_y	Z_x	Z_y	Z_x	Z_y	Z_x	Z_y	
in ²	cm ⁴	in ⁴	cm ⁴	in ⁴	cm	in	cm	in	cm ³	in ³	cm ³	in ³	mmxmmxkg/m
26.51	150,700	3,621	4,788	115.0	29.70	11.69	5.30	2.09	4,018	245.19	362	22.09	762x267x134
28.99	168,500	4,048	5,455	131.1	30.00	11.81	5.40	2.13	4,470	272.78	411	25.08	x147
34.10	205,300	4,932	6,850	164.6	30.50	12.01	5.58	2.20	5,387	328.73	514	31.37	x173
38.91	240,000	5,766	8,175	196.4	30.90	12.17	5.71	2.25	6,234	380.42	610	37.22	x197
34.72	246,000	5,910	7,799	187.4	33.10	13.03	5.90	2.32	5,893	359.61	353	21.54	838x292x176
38.29	279,000	6,703	9,066	217.8	33.60	13.23	6.06	2.39	6,641	405.26	620	37.83	x194
44.80	339,700	8,161	11,360	272.9	34.30	13.50	6.27	2.47	7,985	487.27	773	47.17	x226

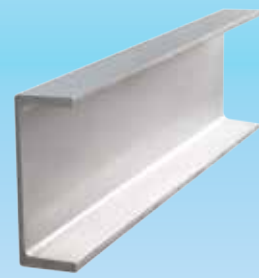
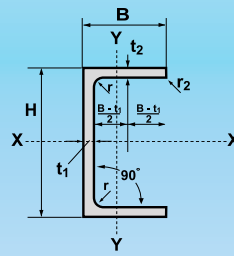
UNIVERSAL COLUMNS

Sectional Area	Moment of Inertia				Radius of Gyration				Modulus of Section				Nominal Size
	I_x	I_y	I_x	I_y	r_x	r_y	r_x	r_y	Z_x	Z_y	Z_x	Z_y	
in ²	cm ⁴	in ⁴	cm ⁴	in ⁴	cm	in	cm	in	cm ³	in ³	cm ³	in ³	mmxmmxkg/m
4.53	1,250	30	400	10	6.54	2.57	3.70	1.46	164	10.0	53	3.2	152x152x23
5.94	1,748	42	560	13	6.76	2.66	3.83	1.51	222	13.5	73	4.5	x30
7.30	2,210	53	706	17	6.85	2.70	3.87	1.52	273	16.7	92	5.6	x37
9.11	4,568	110	1,548	37	8.82	3.47	5.13	2.02	450	27.5	152	9.3	203x203x46
10.28	5,259	126	1,778	43	8.91	3.51	5.18	2.04	510	31.1	174	10.6	x52
11.84	6,125	147	2,065	50	8.96	3.53	5.20	2.05	584	35.6	201	12.3	x60
14.01	7,618	183	2,537	61	9.18	3.61	5.30	2.09	706	43.1	246	15.0	x71
17.05	9,449	227	3,127	75	9.28	3.65	5.34	2.10	850	51.9	299	18.2	x86
14.43	11,410	274	3,908	94	11.10	4.37	6.48	2.55	898	54.8	307	18.7	254x254x73
17.52	14,270	343	4,857	117	11.20	4.41	6.55	2.58	1,096	66.9	379	23.1	x89
21.08	17,510	421	5,928	142	11.30	4.45	6.59	2.59	1,313	80.1	458	27.9	x107
26.04	22,530	541	7,531	181	11.60	4.57	6.69	2.63	1,631	99.5	576	35.1	x132
33.02	30,000	721	9,870	237	11.90	4.69	6.81	2.68	2,075	126.6	744	45.4	x167
19.07	22,250	535	7,308	176	13.40	5.28	7.69	3.03	1,445	88.2	479	29.2	305x305x97
23.25	27,670	665	9,059	218	13.60	5.35	7.77	3.06	1,760	107.4	589	35.9	x118
26.97	32,810	788	10,700	257	13.70	5.39	7.83	3.08	2,048	125.0	692	42.2	x137
31.16	38,750	931	12,570	302	13.90	5.47	7.90	3.11	2,369	144.6	808	49.3	x158
39.06	50,900	1,223	16,300	392	14.20	5.59	8.04	3.17	2,995	182.8	1,037	63.3	x198
47.73	64,200	1,542	20,310	488	14.50	5.71	8.15	3.21	3,643	222.3	1,276	77.9	x240
55.80	78,870	1,895	24,630	592	14.80	5.83	8.27	3.26	4,318	263.5	1,592	93.3	x283
25.42	40,250	967	14,610	351	15.60	6.14	9.43	3.71	2,264	138.2	793	48.4	356x368x129
30.23	48,590	1,167	17,550	422	15.80	6.22	9.49	3.74	2,684	163.8	948	57.9	x153
35.03	57,120	1,372	20,530	493	15.90	6.26	9.54	3.76	3,103	189.4	1,102	67.2	x177
39.84	66,260	1,592	23,690	569	16.10	6.34	9.60	3.78	3,538	215.9	1,264	77.1	x202
46.47	79,110	1,901	31,008	745	16.20	6.38	10.20	4.02	4,153	253.4	1,570	95.8	356x406x235

Note

- The Hot-rolled sections listed in this table are rolled at specific intervals determined by Siam Yamato Steel.
- Contact us for product availability, rolling frequency and other pertinent information.

PARALLEL FLANGE CHANNELS



BS 4-1 : 2005 BS STANDARD

Nominal Size	Weight		Sectional Dimension										Sectional Area
			H		B		t ₁		t ₂		r		
mmxmmxkg/m	kg/m	lb/ft	mm	in	mm	in	mm	in	mm	in	mm	in	cm ²
150x75x18	17.9	12	150.0	5.90	75.0	2.95	5.5	0.22	10.0	0.39	12.0	0.47	22.8
180x75x20	20.3	14	180.0	7.07	75.0	2.95	6.0	0.24	10.5	0.41	12.0	0.47	25.9
200x75x23	23.4	16	200.0	7.86	75.0	2.95	6.0	0.24	12.5	0.49	12.0	0.47	29.9
230x75x26	25.7	17	230.0	9.04	75.0	2.95	6.5	0.26	12.5	0.49	12.0	0.47	32.7
300x90x41	41.4	28	300.0	11.79	90.0	3.54	9.0	0.35	15.5	0.61	12.0	0.47	52.7

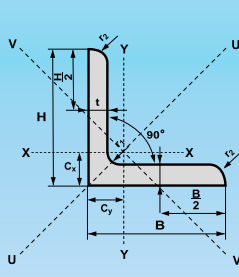
PARALLEL FLANGE CHANNELS

Nominal Size	Sectional Area	Moment of Inertia				Radius of Gyration				Modulus of Section			
		I _x		I _y		i _x		i _y		Z _x		Z _y	
mmxmmxkg/m	in ²	cm ⁴	in ⁴	cm ⁴	in ⁴	cm	in	cm	in	cm ³	in ³	cm ³	in ³
150x75x18	3.52	861	21	131	3.1	6.15	2.41	2.40	0.94	115	6.98	26.6	1.61
180x75x20	4.00	1,370	33	146	3.5	7.27	2.86	2.38	0.94	152	9.23	28.8	1.75
200x75x23	4.62	1,963	47	170	4.1	8.11	3.19	2.39	0.94	196	11.90	33.8	2.05
230x75x26	5.05	2,784	66	181	4.3	9.17	3.60	2.35	0.92	239	14.51	34.8	2.11
300x90x41	8.14	7,218	172	404	9.6	11.70	4.60	2.77	1.09	481	29.20	63.1	3.83

Note

- The Hot-rolled sections listed in this table are rolled at specific intervals determined by Siam Yamato Steel.
- Contact us for product availability, rolling frequency and other pertinent information.

EQUAL-LEG ANGLES



BS EN 10056-1 : 1999 | BS STANDARD

Nominal Size	Mass	Sectional Area	Dimension			Distance of Centre of Gravity			Sectional Properties about axes							
			a	t	r _{root}	c _x -c _y	c _u	c _v	X-X=Y-Y			u-u		V-V		
mmxmmxmm	kg/m	cm ²	mm	mm	mm	cm	cm	cm	I _x -I _y	r _x -r _y	Z _x -Z _y	I _u	r _u	I _v	r _v	Z _v
100x100x8	12.2	15.5	100	8	12	2.74	7.07	3.87	145	3.06	19.9	230	3.85	59.9	1.96	15.5
120x120x10	18.2	23.2	120	10	13	3.31	8.49	4.69	313	3.67	36	497	4.63	129	2.36	27.5
x12	21.6	27.5	120	12	13	3.4	8.49	4.80	368	3.65	42.7	584	4.6	152.0	2.35	31.6
130x130x10	* 19.7	25.2	130	10	14	3.55	9.19	5.03	401	3.99	42.5	638	5.03	164.5	2.55	35.3
x12	23.6	30.0	130	12	14	3.64	9.19	5.15	472	3.97	50.4	750	5.00	194	2.54	37.3
150x150x10	23.0	29.3	150	10	16	4.03	10.6	5.71	624	4.62	56.9	990	5.82	258.0	2.97	45.1
x12	27.3	34.8	150	12	16	4.12	19.6	5.83	737	4.6	67.7	1,170	5.80	303	2.95	52
x15	33.8	43.0	150	15	16	4.25	10.6	6.01	898	4.57	83.5	1,430	5.76	370	2.93	61.6
200x200x16	48.5	61.8	200	16	18	5.52	14.1	7.81	2,340	6.16	162	3,720	7.76	960	3.94	123
x18	54.3	69.1	200	18	18	5.60	14.1	7.92	2,600	6.13	181	4,150	7.75	1,050	3.90	133
x20	59.9	76.3	200	20	18	5.68	14.1	8.04	2,850	6.11	199	4,530	7.70	1,170	3.92	146
x24	71.1	90.6	200	24	18	5.84	14.1	8.26	3,330	6.06	235	5,280	7.64	1,380	3.90	167
250x250x28	104	133.0	250	28	18	7.24	17.7	10.2	7,700	7.62	433	12,200	9.61	3,170	4.89	309
x35	128	163.0	250	35	18	7.50	17.7	10.6	9,260	7.54	529	14,700	9.48	3,860	4.87	364

Note * According to Customer request and Dimension control according to BS EN 10056-1999

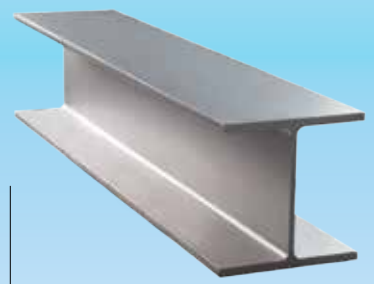
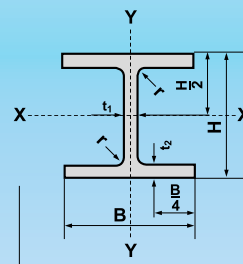
- The Hot-rolled sections listed in this table are rolled at specific intervals determined by Siam Yamato Steel.
- Contact us for product availability, rolling frequency and other pertinent information.



SIAM YAMATO STEEL CO., LTD.
 1 Siam Cement Road, Bangsue,
 Bangkok, 10800, Thailand
 Tel : (662) 586-7777
 Fax : (662) 586-2687
 www.syssteel.com



UNIVERSAL BEARING PILES



BS 4-1 : 2005 BS STANDARD

Nominal Size	Weight		Sectional Dimension										Sectional Area	
			H		B		t ₁		t ₂		r		cm ²	in ²
mmxmmxkg/m	kg/m	lb/ft	mm	in	mm	in	mm	in	mm	in	mm	in	cm ²	in ²
203x203x45	44.9	30	200.2	7.88	205.9	8.11	9.5	0.37	9.5	0.37	10.2	0.4	57.2	8.87
x54	53.9	36	204.0	8.03	207.7	8.18	11.3	0.44	11.4	0.45	10.2	0.4	68.7	10.65
254x254x63	63.0	42	247.1	9.73	256.6	10.10	10.6	0.42	10.7	0.42	12.7	0.5	80.2	12.43
x71	71.0	48	249.7	9.83	258.0	10.16	12.0	0.47	12.0	0.47	12.7	0.5	90.4	14.01
x85	85.1	57	254.3	10.01	260.4	10.25	14.4	0.57	14.3	0.56	12.7	0.5	108.1	16.76
305x305x79	78.9	53	299.3	11.78	306.4	12.06	11.0	0.43	11.1	0.44	15.2	0.6	100.4	15.56
x88	88.0	59	301.7	11.88	307.8	12.12	12.4	0.49	12.3	0.48	15.2	0.6	112.0	17.36
x95	94.9	64	303.7	11.96	308.7	12.15	13.3	0.52	13.3	0.52	15.2	0.6	121.0	18.76
x110	110.0	74	307.9	12.12	310.7	12.23	15.3	0.60	15.4	0.61	15.2	0.6	140.4	21.76
x126	126.1	85	312.3	12.30	312.9	12.32	17.5	0.69	17.6	0.69	15.2	0.6	161.0	24.96
x149	149.1	100	318.5	12.54	316.0	12.44	20.6	0.81	20.7	0.81	15.2	0.6	190.0	29.45
x186	186.0	125	328.3	12.93	320.9	12.63	25.5	1.00	25.6	1.01	15.2	0.6	237.0	36.74
x223	222.9	150	337.9	13.30	325.7	12.82	30.3	1.19	30.4	1.20	15.2	0.6	284.0	44.02
356x368x109	108.9	73	346.4	13.64	371.0	14.61	12.8	0.50	12.9	0.51	15.2	0.6	139.0	21.55
x133	133.0	89	352.0	13.86	373.8	14.72	15.6	0.61	15.7	0.62	15.2	0.6	169.0	26.20
x152	152.0	102	356.4	14.03	376.0	14.80	17.8	0.70	17.9	0.70	15.2	0.6	193.6	30.01
x174	173.9	117	361.4	14.23	378.5	14.90	20.3	0.80	20.4	0.80	15.2	0.6	221.0	34.26

Note

- The Hot-rolled sections listed in this table are rolled at specific intervals determined by Siam Yamato Steel.
- Contact us for product availability, rolling frequency and other pertinent information.