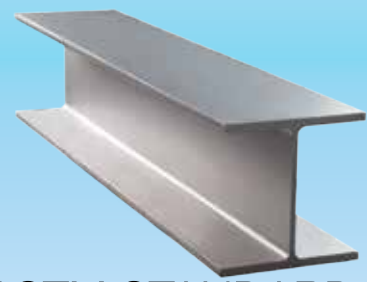
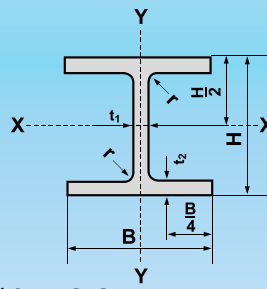


W-SHAPES



ASTM A 6/A 6M : 2003

ASTM STANDARD

Nominal size	Weight		Sectional Dimension										Sectional Area
	kg/m	lb/ft	H	B		t ₁		t ₂		r			
			mm	in	mm	in	mm	in	mm	in	mm	in	cm ²
W4 (4"x4") (102x102)	19.3	13	106	4.16	103	4.060	7.1	0.280	8.8	0.345	6.4	0.25	24.7
W5 (5"x5") (127x127)	23.8	16	127	5.01	127	5.000	6.1	0.240	9.1	0.360	7.6	0.30	30.4
	28.1	19	131	5.15	128	5.030	6.9	0.270	10.9	0.430	7.6	0.30	35.9
W6 (6"x4") (152x102)	13.5	9	150	5.90	100	3.937	4.3	0.169	5.5	0.216	6.0	0.24	17.2
	18.0	12	153	6.03	102	4.000	5.8	0.230	7.1	0.280	6.4	0.25	22.9
	24.0	16	160	6.28	102	4.030	6.6	0.260	10.3	0.405	6.4	0.25	30.6
W6 (6"x6") (152x152)	22.5	15	152	5.99	152	5.990	5.8	0.230	6.6	0.260	7.6	0.30	28.6
	29.8	20	157	6.20	153	6.020	6.6	0.260	9.3	0.365	7.6	0.30	37.9
	37.1	25	162	6.38	154	6.080	8.1	0.320	11.6	0.455	7.6	0.30	47.4
W8 (8"x4") (203x102)	19.3	13	203	7.99	102	4.000	5.8	0.230	6.5	0.255	7.6	0.30	24.8
	22.5	15	206	8.11	102	4.015	6.2	0.245	8.0	0.315	7.6	0.30	28.6
W8 (8"x5 1/4") (203x133)	26.6	18	207	8.14	133	5.250	5.8	0.230	8.4	0.330	7.6	0.30	33.9
	31.3	21	210	8.28	134	5.270	6.4	0.250	10.2	0.400	7.6	0.30	39.7
W8 (8"x6 1/2") (203x165)	35.9	24	201	7.91	165	6.50	6.2	0.244	10.2	0.402	7.6	0.30	45.7
	41.7	28	205	8.07	166	6.54	7.2	0.283	11.8	0.465	7.6	0.30	53.1
W8 (8"x8") (203x203)	46.1	31	203	8.00	203	7.995	7.2	0.285	11.0	0.435	10.2	0.40	58.9
	52.0	35	206	8.12	204	8.020	7.9	0.310	12.6	0.495	10.2	0.40	66.5
	59.0	40	210	8.25	205	8.070	9.1	0.360	14.2	0.560	10.2	0.40	75.5
	71.0	48	216	8.50	206	8.110	10.2	0.400	17.4	0.685	10.2	0.40	91.0
	86.0	58	222	8.75	209	8.220	13.0	0.510	20.6	0.810	10.2	0.40	110.0
W10 (10"x4") (254x102)	17.9	12	251	9.88	101	3.97	4.8	0.189	5.3	0.209	7.6	0.30	22.7
	22.3	15	254	10.00	102	4.010	5.8	0.228	6.9	0.272	7.6	0.30	28.4
	25.3	17	257	10.11	102	4.010	6.1	0.240	8.4	0.330	7.6	0.30	32.2
W10 (10"x5 3/4") (254x146)	28.4	19	260	10.24	102	4.200	6.4	0.250	10.0	0.395	7.6	0.30	36.3
	32.7	22	258	10.17	146	5.750	6.1	0.240	9.1	0.360	7.6	0.30	41.9
	38.5	26	262	10.33	147	5.770	6.6	0.260	11.2	0.440	7.6	0.30	49.1
W10 (10"x10") (254x254)	44.8	30	266	10.47	148	5.810	7.6	0.300	13.0	0.510	7.6	0.30	57.0
	73.0	49	253	9.98	254	10.000	8.6	0.340	14.2	0.560	12.7	0.50	92.9
	80.0	54	256	10.09	255	10.030	9.4	0.370	15.6	0.615	12.7	0.50	102.0
	89.0	60	260	10.22	256	10.080	10.7	0.420	17.3	0.680	12.7	0.50	114.0
	101.0	68	264	10.40	257	10.130	11.9	0.470	19.6	0.770	12.7	0.50	129.0
	115.0	77	269	10.60	259	10.190	13.5	0.530	22.1	0.870	12.7	0.50	146.0
	131.0	88	275	10.84	261	10.265	15.4	0.605	25.1	0.990	12.7	0.50	167.0
W12 (12"x4") (305x102)	149.0	100	282	11.10	263	10.340	17.3	0.680	28.4	1.120	12.7	0.50	190.0
	167.0	112	289	11.36	265	10.415	19.2	0.755	31.8	1.250	12.7	0.50	212.0
	21.0	14	303	11.91	101	3.970	5.1	0.200	5.7	0.225	7.6	0.30	26.8
W12 (12"x6 1/2") (305x165)	23.8	16	305	11.99	101	3.990	5.6	0.220	6.7	0.265	7.6	0.30	30.4
	28.3	19	309	12.16	102	4.005	6.0	0.235	8.9	0.350	7.6	0.30	35.9
	32.7	22	313	12.31	102	4.030	6.6	0.260	10.8	0.425	7.6	0.30	41.8
W12 (12"x8") (305x203)	38.7	26	310	12.22	165	6.490	5.8	0.230	9.7	0.380	8.9	0.35	49.4
	44.5	30	313	12.34	166	6.520	6.6	0.260	11.2	0.440	8.9	0.35	56.7
	52.0	35	317	12.50	167	6.560	7.6	0.300	13.2	0.520	8.9	0.35	66.5
W12 (12"x12") (305x305)	60.0	40	303	11.94	203	8.005	7.5	0.295	13.1	0.515	15.2	0.60	76.1
	67.0	45	306	12.06	204	8.045	8.5	0.335	14.6	0.575	15.2	0.60	85.2
	74.0	50	310	12.19	205	8.080	9.4	0.375	16.3	0.640	15.2	0.60	94.8
W12 (12"x12") (305x305)	97.0	65	308	12.12	305	12.000	9.9	0.390	15.4	0.605	15.2	0.60	123.0
	107.0	72	311	12.25	306	12.040	10.9	0.430	17.0	0.670	15.2	0.60	136.0
	117.0	79	314	12.38	307	12.080	11.9	0.470	18.7	0.735	15.2	0.60	150.0

Note

- The Hot-rolled sections listed in this table are rolled at specific intervals determined by Siam Yamato Steel.

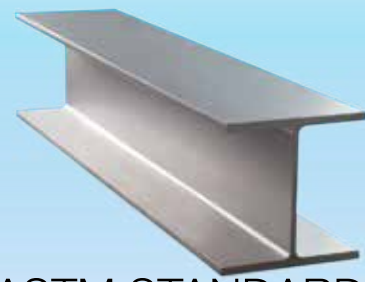
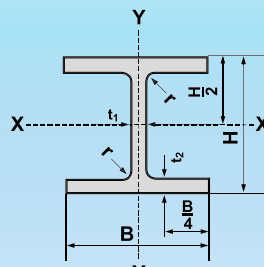
- Contact us for product availability, rolling frequency and other pertinent information.



SIAM YAMATO STEEL CO., LTD.

1 Siam Cement Road, Bangsue,
Bangkok, 10800, Thailand
Tel : (662) 586-7777
Fax : (662) 586-2687
www.syssteel.com

W-SHAPES



ASTM A 6/A 6M : 2003

ASTM STANDARD

Sectional Area	Moment of inertia				Radius of Gyration				Modulus of Section				Nominal Size
	I_x	I_y	I_x	I_y	r_x	r_y	r_x	r_y	Z_x	Z_y	Z_x	Z_y	
in ²	cm ⁴	in ⁴	cm ⁴	in ⁴	cm	in	cm	in	cm ³	in ³	cm ³	in ³	
3.83	475	11.41	160	3.84	4.39	1.73	2.55	1.00	90	5.47	31	1.90	W4 (4"x4") (102x102)
4.68	883	21.21	312	7.50	5.41	2.13	3.21	1.26	139	8.48	49	3.00	W5 (5"x5") (127x127)
5.54	1,090	26.19	381	9.15	5.53	2.18	3.27	1.29	166	10.13	60	3.63	W5 (5"x5") (127x127)
2.68	686	16.00	92	2.20	6.30	2.48	2.30	0.91	91	5.57	18	1.12	W6 (6"x4") (152x102)
3.55	919	22.08	126	3.03	6.33	2.49	2.35	0.93	120	7.32	25	1.51	W6 (6"x4") (152x102)
4.74	1,340	32.19	183	4.40	6.62	2.61	2.45	0.96	168	10.25	36	2.19	W6 (6"x4") (152x102)
4.43	1,210	29.07	387	9.30	6.50	2.56	3.68	1.45	159	9.70	51	3.11	W6 (6"x6") (152x152)
5.87	1,710	41.08	554	13.31	6.72	2.65	3.82	1.50	218	13.30	72	4.42	W6 (6"x6") (152x152)
7.34	2,220	53.34	707	16.99	6.85	2.70	3.87	1.52	274	16.72	92	5.60	W6 (6"x6") (152x152)
3.84	1,650	39.64	115	2.76	8.16	3.21	2.15	0.85	163	9.95	23	1.37	W8 (8"x4") (203x102)
4.44	2,000	48.05	142	3.41	8.36	3.29	2.23	0.88	194	11.84	28	1.70	W8 (8"x4") (203x102)
5.26	2,580	61.98	329	7.90	8.71	2.43	3.11	1.22	249	15.19	50	3.02	W8 (8"x5 1/4") (203x133)
6.16	3,130	75.20	410	9.85	8.87	3.49	3.21	1.26	298	18.19	61	3.73	W8 (8"x5 1/4") (203x133)
7.09	3,438	82.60	764	18.36	8.67	3.41	4.09	1.61	342	20.87	93	5.68	W8 (8"x6 1/2") (203x165)
8.23	4,088	98.21	900	21.62	8.77	3.45	4.12	1.62	399	24.35	109	6.62	W8 (8"x6 1/2") (203x165)
9.13	4,550	109.31	1,530	36.76	8.79	3.46	5.10	2.01	448	27.34	151	9.21	W8 (8"x8") (203x203)
10.30	5,270	126.61	1,780	42.76	8.91	3.51	5.18	2.04	512	31.24	175	10.68	W8 (8"x8") (203x203)
11.70	6,120	147.03	2,040	49.01	8.99	3.54	5.19	2.04	583	35.58	199	12.14	W8 (8"x8") (203x203)
14.10	7,660	184.03	2,540	61.02	9.17	3.61	5.28	2.08	709	43.27	247	15.07	W8 (8"x8") (203x203)
17.10	9,470	227.52	3,140	75.44	9.28	3.65	5.34	2.10	853	52.05	300	18.31	W8 (8"x8") (203x203)
19.70	11,300	271.48	3,660	87.93	9.43	3.71	5.37	2.11	987	60.23	349	21.30	W8 (8"x8") (203x203)
3.52	2,250	54.05	91	2.19	9.9	3.90	2.00	0.79	179	10.92	20	1.21	W10 (10"x4") (254x102)
4.40	2,880	69.19	121	2.91	10.10	3.98	2.06	0.81	227	13.85	24	1.45	W10 (10"x4") (254x102)
4.99	3,420	82.17	149	3.58	10.30	4.06	2.15	0.85	266	16.23	29	1.78	W10 (10"x4") (254x102)
5.62	3,990	95.86	178	4.28	10.50	4.13	2.22	0.87	307	18.73	35	2.13	W10 (10"x4") (254x102)
6.49	4,910	117.96	475	11.41	10.80	4.25	3.37	1.33	381	23.25	65	3.97	W10 (10"x5 3/4") (254x146)
7.61	6,010	144.39	594	14.27	11.10	4.37	3.48	1.37	459	28.01	81	4.93	W10 (10"x5 3/4") (254x146)
8.84	7,110	170.82	703	16.89	11.20	4.41	3.51	1.38	535	32.65	95	5.80	W10 (10"x5 3/4") (254x146)
14.40	11,300	271.48	3,880	93.22	11.00	4.33	6.46	2.54	893	54.49	306	18.67	W10 (10"x10") (254x254)
15.80	12,600	302.72	4,310	103.55	11.10	4.37	6.50	2.56	984	60.05	338	20.63	W10 (10"x10") (254x254)
17.60	14,300	343.56	4,840	116.28	11.20	4.41	6.52	2.57	1,100	67.13	378	23.07	W10 (10"x10") (254x254)
20.00	16,400	394.01	5,550	133.34	11.30	4.45	6.56	2.58	1,240	75.67	432	26.36	W10 (10"x10") (254x254)
22.60	18,900	454.07	6,410	154.00	11.40	4.49	6.63	2.61	1,410	86.04	495	30.21	W10 (10"x10") (254x254)
25.90	22,100	530.95	7,450	178.99	11.50	4.53	6.68	2.63	1,610	98.25	571	34.84	W10 (10"x10") (254x254)
29.40	25,900	622.25	8,620	207.10	11.70	4.61	6.74	2.65	1,840	112.28	656	40.03	W10 (10"x10") (254x254)
32.90	30,000	720.25	9,880	237.37	11.90	4.69	6.81	2.68	2,080	126.93	746	45.52	W10 (10"x10") (254x254)
4.16	3,690	88.60	98	2.36	11.70	4.62	1.91	0.75	244	14.90	20	1.19	W12 (12"x4") (305x102)
4.71	4,290	103.00	117	2.82	11.90	4.67	1.96	0.77	280	17.10	23	1.41	W12 (12"x4") (305x102)
5.57	5,410	130.00	157	3.73	12.20	4.82	2.09	0.82	349	21.30	31	1.88	W12 (12"x4") (305x102)
6.48	6,490	156.00	194	4.66	12.50	4.91	2.15	0.85	416	25.40	38	2.31	W12 (12"x4") (305x102)
7.65	8,480	203.73	723	17.37	13.10	0.52	3.83	1.51	547	33.38	88	5.35	W12 (12"x6 1/2") (305x165)
8.79	9,920	238.33	588	14.13	13.20	0.52	3.88	1.53	634	38.69	103	6.29	W12 (12"x6 1/2") (305x165)
10.30	11,900	285.90	1,030	24.75	13.40	0.53	3.93	1.55	748	45.65	123	7.51	W12 (12"x6 1/2") (305x165)
11.80	12,900	309.92	1,830	43.97	13.00	5.12	4.91	1.93	851	51.93	180	10.98	W12 (12"x8") (305x203)
13.20	14,500	348.36	2,070	49.73	13.00	5.12	4.93	1.94	948	57.85	203	12.39	W12 (12"x8") (305x203)
14.70	16,500	396.41	2,340	56.22	13.20	5.20	4.97	1.96	1,060	64.69	228	13.91	W12 (12"x8") (305x203)
19.10	22,200	533.36	7,290	175.14	13.40	5.28	7.70	3.03	1,440	87.87	478	29.17	W12 (12"x12") (305x305)
21.10	24,800	595.82	8,120	195.08	13.50	5.31	7.73	3.04	1,590	97.03	531	32.40	W12 (12"x12") (305x305)
23.20	27,500	660.69	9,020	216.71	13.50	5.31	7.75	3.05	1,750	106.79	588	35.88	W12 (12"x12") (305x305)

Note

- The Hot-rolled sections listed in this table are rolled at specific intervals determined by Siam Yamato Steel.

- Contact us for product availability, rolling frequency and other pertinent information.



SIAM YAMATO STEEL

SIAM YAMATO STEEL CO., LTD.

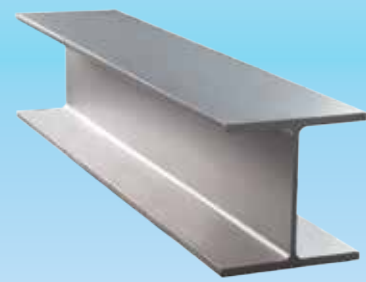
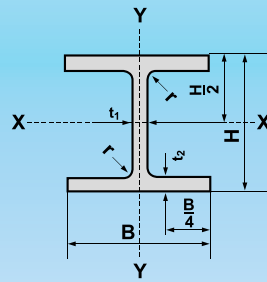
1 Siam Cement Road, Bangsue,
Bangkok, 10800, Thailand
Tel : (662) 586-7777
Fax : (662) 586-2687
www.syssteel.com



W-SHAPES

ASTM A 6/A 6M : 2003

ASTM STANDARD



Nominal size	Weight		Sectional Dimension									Sectional Area	
	kg/m	lb/ft	H		B		t ₁		t ₂		r		
	kg/m	lb/ft	mm	in	mm	in	mm	in	mm	in	mm	in	cm ²
W12 (12"x12") (305x305)	129.0	87	318	12.53	308	12.125	13.1	0.515	20.6	0.810	15.2	0.60	165.0
	143.0	96	323	12.71	309	12.160	14.0	0.550	22.9	0.900	15.2	0.60	182.0
	158.0	106	327	12.89	310	12.220	15.5	0.610	25.1	0.990	15.2	0.60	201.0
	179.0	120	333	13.12	313	12.320	18.0	0.710	28.1	1.105	15.2	0.60	228.0
	202.0	136	341	13.41	315	12.400	20.1	0.790	31.8	1.205	15.2	0.60	257.0
	226.0	152	348	13.71	317	12.480	22.1	0.870	35.6	1.400	15.2	0.60	289.0
	253.0	170	356	14.03	319	12.480	24.4	0.960	39.6	1.560	15.2	0.60	323.0
283.0	190	365	14.03	322	12.570	26.9	1.060	44.1	1.735	15.2	0.60	360.0	
W14 (14"x5") (356x127)	32.9	22	349	13.74	127	5.000	5.8	0.230	8.5	0.335	10.2	0.40	41.9
	39.0	26	353	13.91	128	5.025	6.5	0.255	10.7	0.420	10.2	0.40	49.6
W14 (14"x6 ³ / ₄ ") (356x171)	44.0	30	352	13.84	171	6.730	6.9	0.270	9.8	0.385	10.2	0.40	57.1
	51.0	34	355	13.98	171	6.745	7.2	0.285	11.6	0.455	10.2	0.40	64.5
W14 (14"x10") (356x254)	57.8	38	358	14.10	172	6.770	7.9	0.310	13.1	0.515	10.2	0.40	72.3
	91.0	61	353	13.89	254	9.995	9.5	0.375	16.4	0.645	15.2	0.60	115.0
	101.0	68	357	14.04	255	10.035	10.5	0.415	18.3	0.720	15.2	0.60	129.0
	110.0	74	360	14.17	256	10.070	11.4	0.450	19.9	0.785	15.2	0.60	141.0
W14 (14"x14 ¹ / ₂ ") (356x368)	122.0	82	363	14.31	257	10.130	13.0	0.510	21.7	0.855	15.2	0.60	155.0
	134.0	90	356	14.02	369	14.520	11.2	0.440	18.0	0.710	15.2	0.60	171.0
	147.0	99	360	14.16	370	14.565	12.3	0.485	19.8	0.780	15.2	0.60	188.0
	162.0	109	364	14.32	371	14.605	13.3	0.525	21.8	0.860	15.2	0.60	206.0
W14 (14"x16") (356x406)	179.0	120	368	14.48	373	14.670	15.0	0.590	23.9	0.940	15.2	0.60	228.0
	196.0	132	372	14.66	374	14.725	16.4	0.645	26.2	1.030	15.2	0.60	250.0
W16 (16"x5 ¹ / ₂ ") (406x140)	216.0	145	375	14.80	394	15.500	17.3	0.680	27.7	1.09	15.2	0.60	275.5
	237.0	159	381	15.00	395	15.570	18.9	0.750	30.2	1.19	15.2	0.60	301.3
W16 (16"x7") (406x178)	38.8	26	399	15.69	140	5.500	6.4	0.250	8.8	0.345	10.2	0.40	49.5
	46.1	31	403	15.88	140	5.525	7.0	0.275	11.2	0.440	10.2	0.40	58.8
	53.0	36	403	15.86	177	6.985	7.5	0.295	10.9	0.430	10.2	0.40	68.4
	60.0	40	407	16.01	178	6.995	7.7	0.305	12.8	0.505	10.2	0.40	76.1
	67.0	45	410	16.13	179	7.035	8.8	0.345	14.4	0.565	10.2	0.40	85.8
W18 (18"x6") (457x152)	75.0	50	413	16.26	180	7.070	9.7	0.380	16.0	0.630	10.2	0.40	94.8
	85.0	57	417	16.43	181	7.120	10.9	0.430	18.2	0.715	10.2	0.40	108.0
	52.0	35	450	17.70	152	6.000	7.6	0.300	10.8	0.425	10.2	0.40	66.5
	60.0	40	455	17.90	153	6.015	8.0	0.315	13.3	0.525	10.2	0.40	76.1
W18 (18"x7 ¹ / ₂ ") (457x191)	68.0	46	459	18.06	154	6.060	9.1	0.360	15.4	0.605	10.2	0.40	87.1
	74.0	50	457	17.99	190	7.495	9.0	0.355	14.5	0.570	10.2	0.40	94.8
	82.0	55	460	18.11	191	7.530	9.9	0.390	16.0	0.630	10.2	0.40	105.0
	89.0	60	463	18.24	192	7.555	10.5	0.415	17.7	0.695	10.2	0.40	114.0
	97.0	65	466	18.35	193	7.590	11.4	0.450	19.0	0.750	10.2	0.40	123.0
W21 (21"x6 ¹ / ₂ ") (533x165)	106.0	71	469	18.47	194	7.635	12.6	0.495	20.6	0.810	10.2	0.40	134.0
	66.0	44	525	20.66	165	6.500	8.9	0.350	11.4	0.450	12.7	0.50	83.9
	74.0	50	529	20.83	166	6.530	9.7	0.380	13.6	0.535	12.7	0.50	94.8
W21 (21"x8 ¹ / ₄ ") (533x210)	85.0	57	535	21.06	166	6.555	10.3	0.405	16.5	0.650	12.7	0.50	108.0
	92.0	62	533	20.99	209	8.240	10.2	0.400	15.6	0.615	12.7	0.50	118.0
	101.0	68	537	21.13	210	8.270	10.9	0.430	17.4	0.685	12.7	0.50	129.0
	109.0	73	539	21.24	211	8.295	11.6	0.455	18.8	0.740	12.7	0.50	139.0
	123.0	83	544	21.43	212	8.355	13.1	0.515	21.2	0.835	12.7	0.50	157.0
	138.0	93	549	21.62	214	8.420	14.7	0.580	23.6	0.930	12.7	0.50	176.0

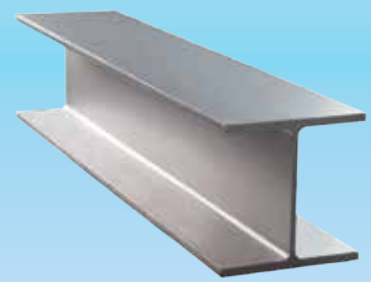
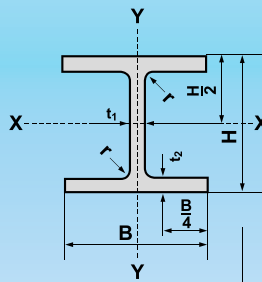
Note

- The Hot-rolled sections listed in this table are rolled at specific intervals determined by Siam Yamato Steel.
- Contact us for product availability, rolling frequency and other pertinent information.

W-SHAPES

ASTM A 6/A 6M : 2003

ASTM STANDARD



Sectional Area	Moment of Inertia				Radius of Gyration				Modulus of Section				Nominal Size
	I_x		I_y		i_x		i_y		Z_x		Z_y		
in ²	cm ⁴	in ⁴	cm ⁴	in ⁴	cm	in	cm	in	cm ³	in ³	cm ³	in ³	
25.60	30,800	739.97	10,000	240.25	13.70	5.39	7.78	3.06	1,940	118.39	649	39.60	W12 (12"x12") (305x305)
28.20	34,800	836.07	11,300	271.48	13.80	5.43	7.88	3.10	2,150	131.20	731	44.61	
31.20	38,600	927.37	12,500	300.31	13.90	5.47	7.89	3.11	2,360	144.02	806	49.19	
35.30	44,500	1,690.12	14,400	345.96	14.00	5.51	7.95	3.13	2,670	162.93	920	56.14	
39.90	52,000	1,249.30	16,600	398.82	14.20	5.59	8.02	3.16	3,050	186.12	1,050	64.07	
44.70	59,600	1,431.90	18,900	454.07	14.40	5.67	8.09	3.19	3,430	209.31	1,190	72.62	
50.00	68,200	1,638.51	21,500	516.54	14.50	5.71	8.16	3.21	3,830	233.72	1,350	82.38	
55.80	78,700	1,890.78	24,600	591.02	14.80	5.83	8.27	3.26	4,310	263.01	1,530	93.37	
6.49	8,290	199.17	291	6.99	14.10	5.55	2.64	1.04	475	28.99	46	2.81	W14 (14"x5") (356x127)
7.69	10,200	245.06	375	9.01	14.30	5.63	2.75	1.08	578	35.27	59	3.58	
8.85	12,100	290.70	816	19.60	14.60	5.75	3.78	1.49	688	41.98	95	5.77	W14 (14"x6 ³ / ₄ ") (356x171)
10.00	14,100	338.75	968	23.26	14.80	5.83	3.87	1.52	794	48.45	113	6.90	
11.20	16,000	384.40	1,110	26.67	14.90	5.87	3.93	1.55	894	54.56	129	7.87	
17.90	26,700	641.47	4,480	107.63	15.20	5.98	6.21	2.44	1,510	92.15	353	21.54	W14 (14"x10") (356x254)
20.00	30,200	725.56	5,060	121.57	15.30	6.02	6.26	2.46	1,690	103.13	397	24.23	
21.80	33,100	795.23	5,570	133.82	15.30	6.02	6.29	2.48	1,840	112.28	435	26.55	
24.10	36,500	876.92	6,150	147.75	15.30	6.02	6.30	2.48	2,010	122.66	479	29.23	
26.50	41,500	997.04	15,100	362.78	15.60	6.14	9.40	3.70	2,330	142.19	818	49.92	W14 (14"x14 ¹ / ₂ ") (356x368)
29.10	46,300	1,112.36	16,700	401.22	15.70	6.18	9.42	3.71	2,570	156.83	903	55.10	
32.00	51,600	1,239.69	18,600	446.87	15.80	6.22	9.48	3.73	2,840	173.31	1,000	61.02	
35.30	57,500	1,381.44	20,700	497.32	15.90	6.26	9.53	3.75	3,130	191.00	1,110	67.74	
38.80	63,600	1,528.00	22,900	550.17	15.90	6.26	9.57	3.77	3,420	208.70	1,220	74.45	W14 (14"x16") (356x406)
42.70	71,200	1,710	28,200	677.00	16.10	6.33	10.1	3.98	3,800	232	1,430	87.30	
46.70	79,100	1,900	31,100	748.00	16.20	6.38	10.2	4.00	4,160	254	1,580	96.20	
7.68	12,600	302.72	402	9.66	15.90	6.26	2.85	1.12	632	38.57	57.4	3.50	W16 (16"x5 ¹ / ₂ ") (406x140)
9.12	15,600	374.79	514	12.35	16.30	6.42	2.95	1.16	774	47.23	73	4.48	
10.60	18,600	446.87	1,010	24.27	16.50	6.50	3.85	1.52	923	56.32	114	6.96	W16 (16"x7") (406x178)
11.80	21,600	518.94	1,200	28.83	16.90	6.65	3.97	1.56	1,060	64.69	135	8.24	
13.30	24,500	588.61	1,380	33.15	16.90	6.65	4.02	1.58	1,200	73.23	154	9.40	
14.70	27,500	660.69	1,560	37.48	17.00	6.69	4.05	1.59	1,330	81.16	173	10.56	
16.80	31,500	756.79	1,800	43.25	17.10	6.73	4.08	1.61	1,510	92.15	199	12.14	
10.30	21,200	509.33	634	15.23	17.90	7.05	3.09	1.22	942	57.48	83	5.09	
11.80	25,500	612.64	796	19.12	18.30	7.20	3.24	1.28	1,120	68.35	104	6.35	
13.50	29,700	713.55	941	22.61	18.40	7.24	3.28	1.29	1,290	78.72	122	7.44	W18 (18"x7 ¹ / ₂ ") (457x191)
14.70	33,300	800.04	1,660	39.88	18.80	7.40	4.19	1.65	1,460	89.09	175	10.68	
16.20	37,000	888.93	1,860	44.69	18.90	7.44	4.23	1.67	1,610	98.25	195	11.90	
17.60	41,000	985.03	2,090	50.21	19.00	7.48	4.28	1.69	1,770	108.01	218	13.30	
19.10	44,500	1,069.12	2,280	54.78	19.00	7.48	4.31	1.70	1,910	116.56	236	14.40	
20.80	48,800	1,172.42	2,510	60.30	19.10	7.52	4.33	1.70	2,080	126.93	259	15.81	W21 (21"x6 ¹ / ₂ ") (533x165)
13.00	35,000	840.88	857	20.59	20.40	8.03	3.20	1.26	1,330	81.16	104	6.35	
14.70	41,000	985.03	1,040	24.99	20.80	8.19	3.31	1.30	1,550	94.59	125	7.63	
16.70	48,500	1,165.22	1,260	30.27	21.20	8.35	3.42	1.35	1,810	110.45	152	9.28	
18.30	55,200	1,326.19	2,380	57.18	21.60	8.50	4.49	1.77	2,070	126.32	228	13.91	W21 (21"x8 ¹ / ₂ ") (533x210)
20.00	61,700	1,482.35	2,690	64.63	21.90	8.62	4.57	1.80	2,300	140.35	256	15.62	
21.50	66,700	1,602.47	2,950	70.87	21.90	8.62	4.61	1.81	2,470	150.73	280	17.09	
24.30	76,100	1,828.31	3,380	81.20	22.00	8.66	4.64	1.83	2,800	170.87	319	19.47	
27.30	86,100	2,068.56	3,870	92.98	22.10	8.70	4.69	1.85	3,140	191.61	362	22.09	

Note

- The Hot-rolled sections listed in this table are rolled at specific intervals determined by Siam Yamato Steel.
- Contact us for product availability, rolling frequency and other pertinent information.



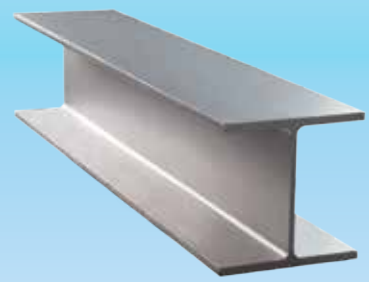
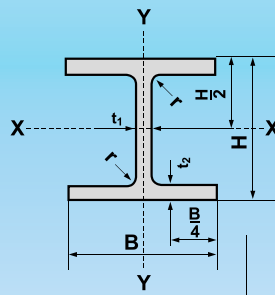
SIAM YAMATO STEEL CO., LTD.

1 Siam Cement Road, Bangsue,
Bangkok, 10800, Thailand
Tel : (662) 586-7777
Fax : (662) 586-2687
www.syssteel.com

W-SHAPES

ASTM A 6/A 6M : 2003

ASTM STANDARD



Nominal size	Weight		Sectional Dimension										Sectional Area
	kg/m	lb/ft	H		B		t ₁		t ₂		r		
			mm	in	mm	in	mm	in	mm	in	mm	in	cm ²
W24 (24"x7") (610x178)	82.0	55	599	23.57	178	7.005	10.0	0.395	12.8	0.505	12.7	0.50	105.0
	92.0	62	603	23.74	179	7.040	10.9	0.430	15.0	0.590	12.7	0.50	117.0
	101.0	68	603	23.73	228	8.965	10.5	0.415	14.9	0.585	12.7	0.50	130.0
W24 (24"x9") (610x229)	113.0	76	608	23.92	229	8.990	11.2	0.440	17.3	0.680	12.7	0.50	145.0
	125.0	84	612	24.10	229	9.020	11.9	0.470	19.6	0.770	12.7	0.50	159.0
	140.0	94	617	24.31	230	9.065	13.1	0.515	22.2	0.875	12.7	0.50	179.0
	153.0	103	623	24.53	229	9.000	14.0	0.550	24.9	0.980	12.7	0.50	196.0
W24 (24"x12 ³ / ₄ ") (610x324)	155.0	104	611	24.06	324	12.750	12.7	0.500	19.0	0.750	12.7	0.50	197.0
	174.0	117	616	24.26	325	12.800	14.0	0.550	21.6	0.850	12.7	0.50	222.0
	195.0	131	622	24.48	327	12.855	15.4	0.605	24.4	0.960	12.7	0.50	248.0
	217.0	146	628	24.74	328	12.900	16.5	0.650	27.7	1.090	12.7	0.50	277.0
	241.0	162	635	25.00	329	12.955	17.1	0.705	31.0	1.220	12.7	0.50	308.0
W27 (27"x10") (686x254)	125.0	84	678	26.71	253	9.960	11.7	0.460	16.3	0.640	15.2	0.60	160.0
	140.0	94	684	26.92	254	9.990	12.4	0.490	18.9	0.745	15.2	0.60	179.0
	152.0	102	688	27.09	254	10.015	13.1	0.515	21.1	0.830	15.2	0.60	194.0
	170.0	114	693	27.29	256	10.070	14.5	0.570	23.6	0.930	15.2	0.60	216.0
W30 (30"x10 ¹ / ₂ ") (762x267)	192.0	129	702	27.63	254	10.010	15.5	0.610	27.9	1.100	15.2	0.60	244.0
	134.0	90	750	26.40	264	10.400	11.9	0.470	15.5	0.610	16.5	0.65	170.4
	147.0	99	753	29.10	265	10.450	13.2	0.520	17.0	0.670	16.5	0.65	188.0
	161.0	108	758	31.70	266	10.475	13.8	0.545	19.3	0.760	16.5	0.65	205.0
	173.0	116	762	34.20	267	10.495	14.4	0.565	21.6	0.850	16.5	0.65	221.0
	185.0	124	766	36.50	267	10.515	14.9	0.585	23.6	0.930	16.5	0.65	235.0
W33 (33"x11 ¹ / ₂ ") (838x292)	196.0	132	770	38.90	268	10.545	15.6	0.615	25.4	1.000	16.5	0.65	251.0
	220.0	148	779	30.67	266	10.480	16.5	0.650	30.0	1.180	16.5	0.65	281.0
	176.0	118	835	32.86	292	11.480	14.0	0.550	18.8	0.740	17.8	0.70	224.0
	193.0	130	840	33.09	292	11.510	14.7	0.580	21.7	0.855	17.8	0.70	247.0
	210.0	141	846	33.30	293	11.535	15.4	0.605	24.4	0.960	17.8	0.70	268.0
	226.0	152	851	33.49	294	11.565	16.1	0.635	26.8	1.050	17.8	0.70	289.0
	251.0	169	859	33.82	292	11.500	17.0	0.670	31.0	1.220	17.8	0.70	319.0

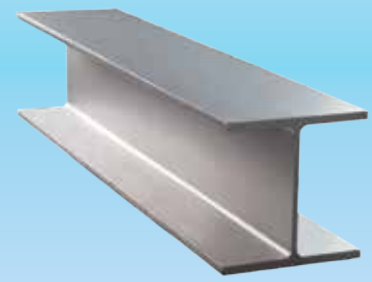
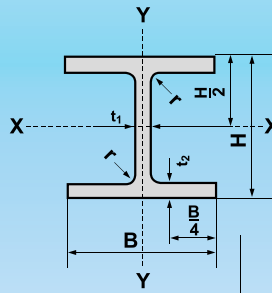
Note

- The Hot-rolled sections listed in this table are rolled at specific intervals determined by Siam Yamato Steel.
- Contact us for product availability, rolling frequency and other pertinent information.

W-SHAPES

ASTM A 6/A 6M : 2003

ASTM STANDARD



Sectional Area	Moment of Inertia				Radius of Gyration				Modulus of Section				Nominal Size
	I_x		I_y		i_x		i_y		Z_x		Z_y		
in ²	cm ⁴	in ⁴	cm ⁴	in ⁴	cm	in	cm	in	cm ³	in ³	cm ³	in ³	
16.20	56,000	1,345.41	1,210	29.07	23.10	9.09	3.39	1.33	1,870	114.11	136	8.30	W24 (24"x7") (610x178)
18.20	64,600	1,552.02	1,440	34.60	23.40	9.21	3.49	1.37	2,140	130.59	161	9.82	
20.10	76,400	1,835.52	2,950	70.87	24.30	9.57	4.78	1.88	2,530	154.39	259	15.81	W24 (24"x9") (610x229)
22.40	87,500	2,102.20	3,430	82.41	24.70	9.72	4.88	1.92	2,880	175.75	301	18.37	
24.70	98,500	2,366.47	3,930	94.42	24.90	9.80	4.97	1.96	3,220	196.50	343	20.93	
27.70	112,000	2,690.81	4,510	108.35	25.00	9.84	5.02	1.98	3,630	221.52	392	23.92	
30.30	125,000	3,003.14	5,000	120.13	25.30	9.96	5.06	1.99	4,010	244.71	437	26.67	
30.60	129,000	3,099.24	10,800	259.47	25.50	10.04	7.39	2.91	4,220	257.52	667	40.70	W24 (24"x12 ³ / ₄ ") (610x324)
34.40	147,000	3,531.69	12,400	297.91	25.70	10.12	7.47	2.94	4,770	291.08	763	46.56	
38.50	168,000	4,036.22	14,200	341.16	26.00	10.24	7.55	2.97	5,400	329.53	869	53.03	
43.30	191,000	4,588.79	16,300	391.61	26.30	10.35	7.67	3.02	6,080	371.02	994	60.66	
47.70	215,000	5,165.40	18,400	442.06	26.40	10.39	7.73	3.04	6,770	413.13	1,120	68.35	
20.10	119,000	2,858.99	4,410	105.95	27.30	10.75	5.25	2.07	3,510	214.19	349	21.30	W27 (27"x10") (686x254)
22.40	136,000	3,267.41	5,170	124.21	27.60	10.87	5.39	2.12	3,980	242.87	407	24.84	
24.70	151,000	3,627.79	5,780	138.87	27.90	10.98	5.46	2.15	4,390	267.89	455	27.77	
27.70	170,000	4,084.27	6,620	159.05	28.10	11.06	5.54	2.18	4,910	299.63	517	31.55	
30.30	198,000	4,756.97	7,640	183.55	28.50	11.22	5.60	2.20	5,640	344.17	602	36.74	
20.10	150,000	3,603.76	4,770	114.60	29.70	11.69	5.30	2.09	4,000	244.09	361	22.03	W30 (30"x10 ¹ / ₂ ") (762x267)
22.40	166,000	3,988.17	5,290	127.09	29.70	11.69	5.30	2.09	4,410	269.11	399	24.35	
24.70	186,000	4,468.67	6,070	145.83	30.10	11.85	5.44	2.14	4,910	299.63	456	27.83	
24.70	206,000	4,949.17	6,870	165.05	30.50	12.01	5.58	2.20	5,410	330.14	515	31.43	
24.70	223,000	5,357.60	7,510	180.43	30.80	12.13	5.65	2.22	5,820	355.16	563	34.36	
30.30	240,000	5,766.02	8,170	196.29	30.90	12.17	5.71	2.25	6,230	380.18	610	37.22	
43.60	278,000	6,678.98	9,440	226.80	31.50	12.40	5.80	2.28	7,140	435.71	710	43.33	
34.70	246,000	5,910.17	7,820	187.88	33.10	13.03	5.91	2.33	5,890	359.43	536	32.71	
38.30	278,000	6,678.98	9,030	216.95	33.50	13.19	6.05	2.38	6,620	403.98	618	37.71	W33 (33"x11 ¹ / ₂ ") (838x292)
41.60	311,000	7,471.80	10,300	247.46	34.10	13.43	6.20	2.44	7,350	448.52	703	42.90	
44.70	340,000	8,168.53	11,400	273.89	34.30	13.50	6.28	2.47	7,990	487.58	776	47.35	
49.40	386,000	9,273.69	12,900	309.92	34.80	13.70	6.36	2.50	8,990	548.60	884	53.94	

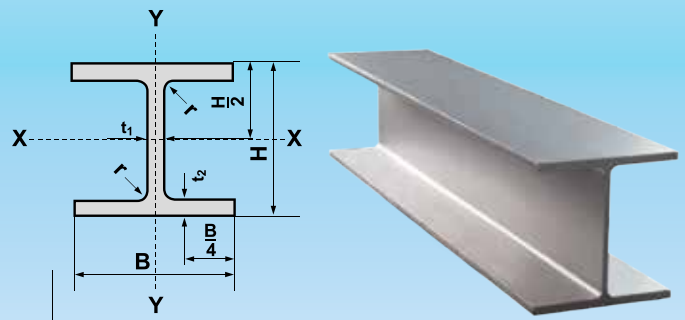
Note

- The Hot-rolled sections listed in this table are rolled at specific intervals determined by Siam Yamato Steel.
- Contact us for product availability, rolling frequency and other pertinent information.

H-PILES

ASTM A 6/A 6M : 2003

ASTM STANDARD



Nominal Size	Weight		Sectional Dimension								Sectional Area	
			H		B		t ₁		t ₂			
mmxmmxkg/m	kg/m	lb/ft	mm	in	mm	in	mm	in	mm	in	cm ²	in ²
HP8 (8"x8")	53	36	204	8.02	207	8.155	11.3	0.445	11.3	0.445	68.4	10.6
HP10 (10"x10")	62	42	246	9.70	256	10.075	10.5	0.415	10.7	0.420	80.0	12.4
	85	57	254	9.99	260	10.225	14.4	0.565	14.4	0.565	108.0	16.8
HP12 (12"x12")	79	53	299	11.78	306	12.045	11.0	0.435	11.0	0.435	100.0	15.5
	93	63	303	11.94	308	12.125	13.1	0.515	13.1	0.515	119.0	18.4
	110	74	308	12.13	310	12.215	15.4	0.605	15.5	0.610	141.0	21.8
	125	84	312	12.28	312	12.295	17.4	0.685	17.4	0.685	159.0	24.6
	108	73	346	13.61	370	14.585	12.8	0.505	12.8	0.505	138.0	21.4
HP14 (14"x14-1/2")	132	89	351	13.83	373	14.695	15.6	0.615	15.6	0.615	168.0	26.1
	152	102	356	14.01	376	14.785	17.9	0.705	17.9	0.705	194.0	30.0
	174	117	361	14.21	378	14.885	20.4	0.805	20.4	0.805	222.0	34.4

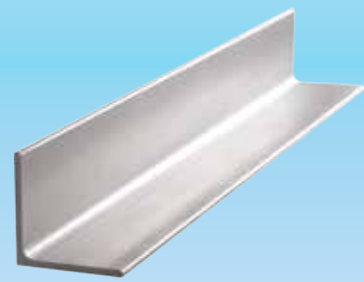
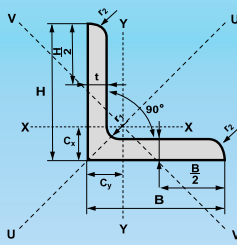
Note

- The Hot-rolled sections listed in this table are rolled at specific intervals determined by Siam Yamato Steel.
- Contact us for product availability, rolling frequency and other pertinent information.

ANGLES

ASTM A 6/A 6M : 2003

ASTM STANDARD



Standard Sectional Dimension		Sectional Area		Weight		Moment of Inertia				Radius of Gyration				Modulus of Section		Distance of center of gravity	
HxB	t		cm ²	kg/m	i _x	i _y	i _u	i _v	i _x	i _y	i _u	i _v	Z _x	Z _y	C _x	C _y	
	mm	in			cm ⁴	cm ⁴	cm ⁴	cm ⁴	cm	cm	cm	cm	cm ³	cm ³	cm	cm	
L4 (4"x4") (102x102)	6.4	0.252	12.50	9.8	125	125	197	51	3.17	3.17	4.00	2.02	17.0	17.02	2.76	208	
	7.9	0.311	15.50	12.2	154	154	243	63	3.15	3.15	3.98	2.01	21.0	20.99	2.82	245	
	9.5	0.374	18.50	14.6	180	180	284	72	3.12	3.12	3.93	2.00	24.7	24.7	2.87	286	
L6 (6"x6") (152x152)	12.7	0.500	37.10	29.2	822	822	1,294	347	4.71	4.71	5.90	3.06	75.1	75.1	4.27	136	
	14.3	0.563	41.50	32.6	912	912	1,434	387	4.69	4.69	5.88	3.05	83.8	83.8	4.33	152	
	15.9	0.625	45.90	36.0	999	999	1,569	425	4.67	4.67	5.85	3.04	92.3	92.3	4.39	167	
	19.0	0.750	54.50	42.7	1,160	1,160	1,849	466	4.62	4.62	5.82	2.92	108.0	108.0	4.50	197	
L8 (8"x8") (203x203)	15.9	0.625	62.00	48.7	2,470	2,470	3,909	1,040	6.31	6.31	7.94	4.09	169.0	169.0	5.66	305	
	19.0	0.750	73.60	57.9	2,890	2,890	4,566	1,225	6.26	6.26	7.87	4.08	199.0	199.0	5.78	361	
	22.2	0.875	85.02	67.0	3,300	3,300	5,207	1,406	6.22	6.22	7.82	4.06	229.0	229.0	5.89	415	
	25.4	1.000	96.80	75.9	3,690	3,690	5,765	1,631	6.17	6.17	7.72	4.10	258.0	258.0	6.01	467	

Note

- The Hot-rolled sections listed in this table are rolled at specific intervals determined by Siam Yamato Steel.
- Contact us for product availability, rolling frequency and other pertinent information.