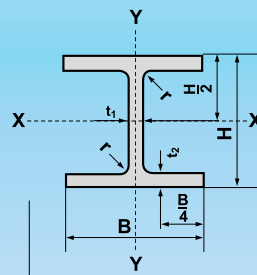


H-BEAMS

JIS G 3192 : 1990

JIS STANDARD

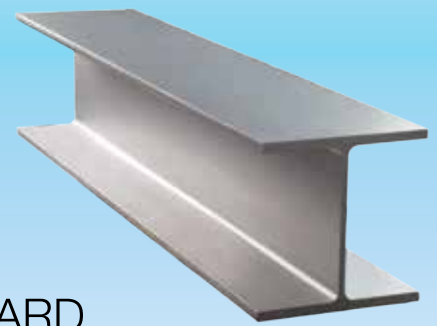
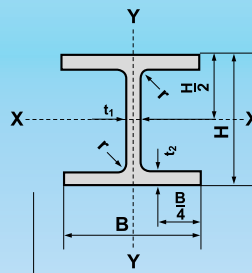


Nominal Size	Weight	Sectional Dimension					Sectional Area	Moment of Inertia		Radius of Gyration		Modulus of Section	
		H	B	t ₁	t ₂	r		I _x	I _y	i _x	i _y	Z _x	Z _y
mm	kg/m	mm	mm	mm	mm	mm	cm ²	cm ⁴	cm ⁴	cm	cm	cm ³	cm ³
100x50	9.3	100	50	5.0	7	8	11.85	187	14.8	3.98	1.12	37.5	5.91
100x100	17.2	100	100	6.0	8	10	21.90	383	134	4.2	2.47	77	27
125x125	23.8	125	125	6.5	9	10	30.31	847	293	5.3	3.11	136	47
150x75	14.0	150	75	5.0	7	8	17.85	666	50	6.1	1.66	89	13
150x100	21.1	148	100	6.0	9	11	26.84	1,020	151	6.2	2.37	138	30
150x150	31.5	150	150	7.0	10	11	40.14	1,640	563	6.4	3.75	219	75
175x90	18.1	175	90	5.0	8	9	23.04	1,210	97.5	7.26	2.06	139	21.7
175x175	40.2	175	175	7.5	11	12	51.21	2,880	984	7.5	4.38	330	112
200x100	18.2	198	99	4.5	7	11	23.18	1,580	114	8.3	2.21	160	23
	21.3	200	100	5.5	8	11	27.16	1,840	134	8.2	2.22	184	27
200x150	30.6	194	150	6.0	9	13	39.01	2,690	507	8.3	3.61	277	68
200x200	49.9	200	200	8.0	12	13	63.53	4,720	1,600	8.6	5.02	472	160
	56.2	200	204	12.0	12	13	71.53	4,980	1,700	8.4	4.88	498	167
	65.7	208	202	10.0	16	13	83.69	6,530	2,200	8.8	5.13	628	218
250x125	25.7	248	124	5.0	8	12	32.68	3,540	255	10.4	2.79	285	41
	29.6	250	125	6.0	9	12	37.66	4,050	294	10.4	2.79	324	47
250x175	44.1	244	175	7.0	11	16	56.24	6,120	984	10.4	4.18	502	113
250x250	64.4	244	252	11.0	11	16	82.06	8,790	2,940	10.3	5.98	720	233
	66.5	248	249	8.0	13	16	84.70	9,930	3,350	10.8	6.29	801	269
	72.4	250	250	9.0	14	16	92.18	10,800	3,650	10.8	6.29	867	292
	82.2	250	255	14.0	14	16	104.70	11,500	3,880	10.5	6.09	919	304
300x150	32.0	298	149	5.5	8	13	40.80	6,320	442	12.4	3.29	424	59
	36.7	300	150	6.5	9	13	46.78	7,210	508	12.4	3.29	481	68
300x200	56.8	294	200	8.0	12	18	72.38	11,300	1,600	12.5	4.71	771	160
	65.4	298	201	9.0	14	18	83.36	13,300	1,900	12.6	4.77	893	189
300x300	84.5	294	302	12.0	12	18	107.70	16,900	5,520	12.5	7.16	1,150	365
	87.0	298	299	9.0	14	18	110.80	18,800	6,240	13.0	7.51	1,270	417
	94.0	300	300	10.0	15	18	119.80	20,400	6,750	13.1	7.51	1,360	450
	106.0	300	305	15.0	15	18	134.80	21,500	7,100	12.6	7.26	1,440	466
	106.0	304	301	11.0	17	18	134.80	23,400	7,730	13.2	7.57	1,540	514
350x175	41.4	346	174	6.0	9	14	52.68	11,100	792	14.5	3.88	641	91
	49.6	350	175	7.0	11	14	63.14	13,600	984	14.7	3.95	775	112
	57.8	354	176	8.0	13	14	73.68	16,100	1,180	14.8	4.01	909	134
350x250	69.2	336	249	8.0	12	20	88.15	18,500	3,090	14.5	5.92	1,100	248
	79.7	340	250	9.0	14	20	101.50	21,700	3,650	14.6	6.00	1,280	292
350x350	106.0	338	351	13.0	13	20	135.30	28,200	9,380	14.4	8.33	1,670	534
	115.0	344	348	10.0	16	20	146.00	33,300	11,200	15.1	8.78	1,940	646
	131.0	344	354	16.0	16	20	166.60	35,300	11,800	14.6	8.43	2,050	669
	137.0	350	350	12.0	19	20	173.90	40,300	13,600	15.2	8.84	2,300	776
	156.0	350	357	19.0	19	20	198.40	42,800	14,400	14.7	8.53	2,450	809

H-BEAMS

JIS G 3192 : 1990

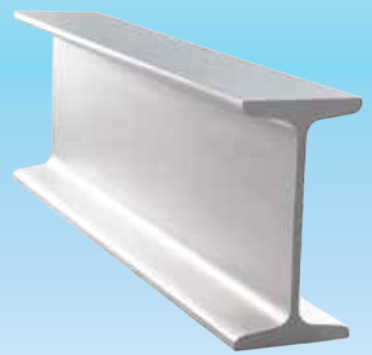
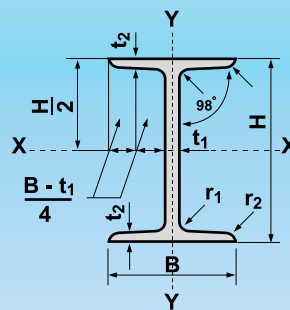
JIS STANDARD



Nominal Size	Weight	Sectional Dimension					Sectional Area	Moment of Inertia		Radius of Gyration		Modulus of Section	
		H	B	t ₁	t ₂	r		I _x	I _y	I _x	I _y	Z _x	Z _y
mm	kg/m	mm	mm	mm	mm	mm	cm ²	cm ⁴	cm ⁴	cm	cm	cm ³	cm ³
400x200	56.6	396	199	7.0	11	16	72.16	20,000	1,450	16.7	4.48	1,010	145
	66.0	400	200	8.0	13	16	84.12	23,700	1,740	16.8	4.54	1,190	174
	75.5	404	201	9.0	15	16	96.16	27,500	2,030	16.9	4.60	1,360	202
400x300	94.3	386	299	9.0	14	22	120.10	33,700	6,240	16.7	7.21	1,740	418
	107.0	390	300	10.0	16	22	136.00	38,700	7,210	16.9	7.28	1,980	481
400x400	140.0	388	402	15.0	15	22	178.50	49,000	16,300	16.6	9.54	2,520	809
	147.0	394	398	11.0	18	22	186.80	56,100	18,900	17.3	10.10	2,850	951
	168.0	394	405	18.0	18	22	214.40	59,700	20,000	16.7	9.65	3,030	985
	172.0	400	400	13.0	21	22	218.70	66,600	22,400	17.5	10.10	3,330	1,120
	197.0	400	408	21.0	21	22	250.70	70,900	23,800	16.8	9.75	3,540	1,170
450x200	232.0	414	405	18.0	28	22	295.40	92,800	31,000	17.7	10.20	4,480	1,530
	66.2	446	199	8.0	12	18	84.30	28,700	1,580	18.5	4.33	1,290	159
	76.0	450	200	9.0	14	18	96.76	33,500	1,870	18.6	4.40	1,490	187
450x300	88.9	456	201	10.0	17	18	113.30	40,400	2,310	18.9	4.51	1,770	230
	106.0	434	299	10.0	15	24	135.00	46,800	6,690	18.6	7.04	2,160	448
	124.0	440	300	11.0	18	24	157.40	56,100	8,110	18.9	7.18	2,550	541
500x200	145.0	446	302	13.0	21	24	184.30	66,400	9,660	19.0	7.24	2,980	639
	79.5	496	199	9.0	14	20	101.30	41,900	1,840	20.3	4.27	1,690	185
	89.6	500	200	10.0	16	20	114.20	47,800	2,140	20.5	4.33	1,910	214
500x300	103.0	506	201	11.0	19	20	131.30	56,500	2,580	20.7	4.43	2,230	257
	114.0	482	300	11.0	15	26	145.50	60,400	6,760	20.4	6.82	2,500	451
	128.0	488	300	11.0	18	26	163.50	71,000	8,110	20.8	7.04	2,910	541
600x200	150.0	494	302	13.0	21	26	191.40	83,800	9,660	20.9	7.10	3,390	640
	94.6	596	199	10.0	15	22	120.50	68,700	1,980	23.9	4.05	2,310	199
	106.0	600	200	11.0	17	22	134.40	77,600	2,280	24.0	4.12	2,590	228
600x300	120.0	606	201	12.0	20	22	152.50	90,400	2,720	24.3	4.22	2,980	271
	134.0	612	202	13.0	23	22	170.70	103,000	3,180	24.6	4.31	3,380	314
	137.0	582	300	12.0	17	28	174.50	103,000	7,670	24.3	6.63	3,530	511
700x300	151.0	588	300	12.0	20	28	192.50	118,000	9,020	24.8	6.85	4,020	601
	175.0	594	302	14.0	23	28	222.40	137,000	10,600	24.9	6.90	4,620	701
	166.0	692	300	13.0	20	28	211.50	172,000	9,020	28.6	6.53	4,980	602
800x300	185.0	700	300	13.0	24	28	235.50	201,000	10,800	29.3	6.78	5,760	722
	191.0	792	300	14.0	22	28	243.40	254,000	9,930	32.3	6.39	6,410	662
	210.0	800	300	14.0	26	28	267.40	292,000	11,700	33.0	6.62	7,290	782
900x300	213.0	890	299	15.0	23	28	270.90	345,000	10,300	35.7	6.16	7,760	688
	243.0	900	300	16.0	28	28	309.80	411,000	12,600	36.4	6.39	9,140	843
	286.0	912	302	18.0	34	28	364.00	498,000	15,700	37.0	6.56	10,900	1,040

I-BEAMS

JIS G 3192 : 1990 JIS STANDARD



Standard Sectional Dimension

Sectional Area

Weight

Moment of Inertia

Radius of Gyration

Modulus of Section

HxB	t ₁	t ₂	r ₁	r ₂	Sectional Area	Weight	Moment of Inertia	Moment of Inertia	Radius of Gyration	Radius of Gyration	Modulus of Section	Modulus of Section
mm	mm	mm	mm	mm	cm ²	kg/m	cm ⁴	cm ⁴	cm	cm	cm ³	cm ³
150x75	5.5	9.5	9	4.5	21.83	17.1	819	57.5	6.12	1.62	109	15.3
200x100	7.0	10.0	10	5.0	33.06	26.0	2,170	138	8.11	2.05	217	27.7
200x150	9.0	16.0	15	7.5	64.16	50.4	4,460	753	8.34	3.43	446	100.0
250x125	7.5	12.5	12	6.0	48.79	38.3	5,180	337	10.30	2.63	414	53.9
	10.0	19.0	21	10.5	70.73	55.5	7,310	538	10.20	2.76	585	86.0
300x150	8.0	13.0	12	6.0	61.58	48.3	9,480	588	12.40	3.09	632	78.4
	10.0	18.5	19	9.5	83.47	65.5	12,700	886	12.30	3.26	849	118.0
	11.5	22.0	23	11.5	97.88	76.8	14,700	1,080	12.20	3.32	978	143.0
350x150	9.0	15.0	13	6.5	74.58	58.5	15,200	702	14.30	3.07	870	93.5
	12.0	24.0	25	12.5	111.10	87.2	22,400	1,180	14.20	3.26	1,280	158.0
400x150	10.0	18.0	17	8.5	91.73	72.0	24,100	864	16.20	3.07	1,200	115.0
	12.5	25.0	27	13.5	122.10	95.8	31,700	1,240	16.10	3.18	1,580	165.0
450x175	11.0	20.0	19	9.5	116.80	91.7	39,200	1,510	18.30	3.60	1,740	173.0
	13.0	26.0	27	13.5	146.10	115.0	48,800	2,020	18.30	3.72	2,170	231.0
600x190	13.0	25.0	25	12.5	169.40	133.0	98,400	2,460	24.10	3.81	3,280	259.0
	16.0	35.0	38	19.0	224.50	176.0	130,000	3,540	24.10	3.97	4,330	373.0

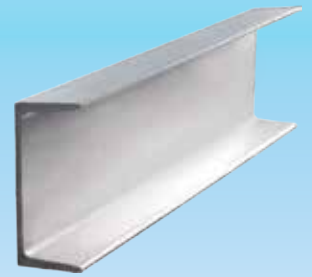
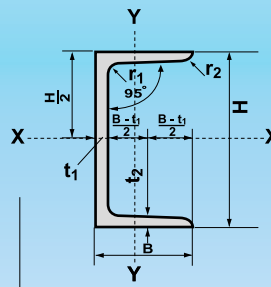
Note

- The Hot-rolled sections listed in this table are rolled at specific intervals determined by Siam Yamato Steel.
- Contact us for product availability, rolling frequency and other pertinent information.

CHANNELS

JIS G 3192 : 1990

JIS STANDARD



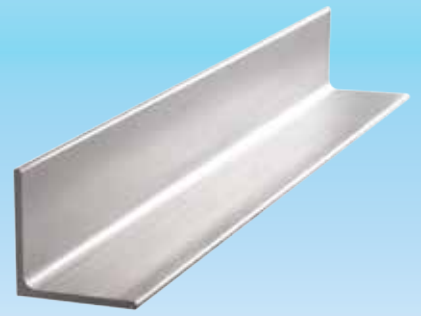
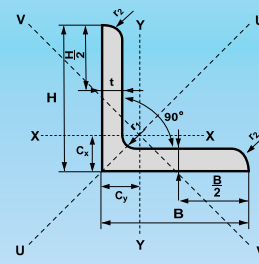
Standard Sectional Dimension					Sectional Area	Weight	Moment of Inertia		Radius of Gyration		Modulus of Section	
HxB	t ₁	t ₂	r ₁	r ₂			I _x	I _y	i _x	i _y	Z _x	Z _y
mm	mm	mm	mm	mm	cm ²	kg/m	cm ⁴	cm ⁴	cm	cm	cm ³	cm ³
75x40	* 5.0	7.0	8	4.0	8.818	6.92	75.3	12.2	2.92	1.17	20.1	4.47
100x50	5.0	7.5	8	4.0	11.92	9.36	188	26.0	3.97	1.48	37.6	7.52
125x65	6.0	8.0	8	4.0	17.11	13.40	424	61.8	4.98	1.90	67.8	13.4
150x75	6.5	10.0	10	5.0	23.71	18.60	861	117.0	6.03	2.22	115.0	22.4
	9.0	12.5	15	7.5	30.59	24.00	1,050	147.0	5.86	2.19	140.0	28.3
180x75	7.0	10.5	11	5.5	27.20	21.4	1,380	131	7.12	2.19	153	24.3
200x80	7.5	11.0	12	6.0	31.33	24.6	1,950	168	7.88	2.32	195	29.1
200x90	8.0	13.5	14	7.0	38.65	30.3	2,490	277	8.02	2.68	249	44.2
250x90	9.0	13.0	14	7.0	44.07	34.6	4,180	294	9.74	2.58	334	44.5
	11.0	14.5	17	8.5	51.17	40.2	4,680	329	9.56	2.54	374	49.9
300x90	9.0	13.0	14	7.0	48.57	38.1	6,440	309	11.50	2.52	429	45.7
	10.0	15.5	19	9.5	55.74	43.8	7,410	360	11.50	2.54	494	54.1
	12.0	16.0	19	9.5	61.90	48.6	7,870	379	11.30	2.48	525	56.4
380x100	10.5	16.0	18	9.0	69.39	54.5	14,500	535	14.50	2.78	763	70.5
	* 13.0	16.5	18	9.0	78.96	62.0	15,600	565	14.10	2.67	823	73.6
	13.0	20.0	24	12.0	85.71	67.3	17,600	655	14.30	2.76	926	87.8

Note

- * Please contact us in advance for these items.
- The Hot-rolled sections listed in this table are rolled at specific intervals determined by Siam Yamato Steel.
- Contact us for product availability, rolling frequency and other pertinent information.

ANGLES

JIS G 3192 : 1990 JIS STANDARD

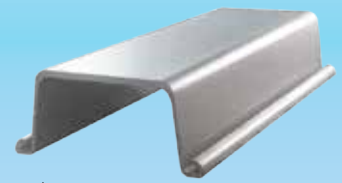
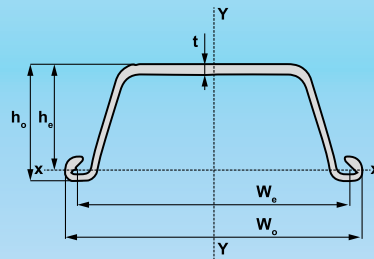


Standard Sectional Dimension				Sectional Area	Weight	Moment of Inertia				Radius of Gyration				Modulus of Section		Distance of center of gravity	
HxB	t	r ₁	r ₂			I _x	I _y	I _u	I _v	i _x	i _y	i _u	i _v	Z _x	Z _y	C _x	C _y
mm	mm	mm	mm	cm ²	kg/m	cm ⁴	cm ⁴	cm ⁴	cm ⁴	cm	cm	cm	cm	cm ³	cm ³	cm	cm
100x100	7	10	5.0	13.62	10.7	129	129	205	53.2	3.08	3.08	3.88	1.98	17.7	17.7	2.71	2.71
	10	10	7.0	19.00	14.9	175	175	278	72.0	3.04	3.04	3.83	1.95	24.4	24.4	2.82	2.82
	12	12	4.8	22.70	17.8	207	207	328	85.7	3.02	3.02	3.80	1.94	29.1	29.1	2.90	2.90
	13	10	7.0	24.31	19.1	220	220	348	91.1	3.00	3.00	3.78	1.94	31.1	31.1	2.94	2.94
120x120	8	12	5.0	18.76	14.7	258	258	410	106	3.71	3.71	4.67	2.38	29.5	29.5	3.24	3.24
130x130	9	12	6.0	22.74	17.9	366	366	583	150	4.01	4.01	5.06	2.57	38.7	38.7	3.53	3.53
	12	12	8.5	29.76	23.4	467	467	743	192	3.96	3.96	5.00	2.54	49.9	49.9	3.64	3.64
	15	12	8.5	36.75	28.8	568	568	902	234	3.93	3.93	4.95	2.53	61.5	61.5	3.76	3.76
150x150	12	14	7.0	34.77	27.3	740	740	1,180	304	4.61	4.61	5.82	2.96	68.1	68.1	4.14	4.14
	15	14	10.0	42.74	33.6	888	888	1,410	365	4.56	4.56	5.75	2.92	82.6	82.6	4.24	4.24
	19	14	10.0	53.38	41.9	1,090	1,090	1,370	451	4.52	4.52	5.69	2.91	103.0	103.0	4.40	4.40
175x175	12	15	11.0	40.52	31.8	1,170	1,170	1,860	480	5.38	5.38	6.78	3.44	91.8	91.8	4.73	4.73
	15	15	11.0	50.21	39.4	1,440	1,440	2,260	589	5.35	5.35	6.75	3.42	114.0	114.0	4.85	4.85
200x200	15	17	12.0	57.75	45.3	2,180	2,180	3,470	891	6.14	6.14	7.75	3.92	150.0	150.0	5.46	5.46
	20	17	12.0	76.00	59.7	2,820	2,820	4,490	1,160	6.09	6.09	7.68	3.90	197.0	197.0	5.67	5.67
	25	17	12.0	93.75	73.6	3,420	3,420	5,420	1,410	6.04	6.04	7.61	3.88	242.0	242.0	5.86	5.86
250x250	25	24	12.0	119.40	93.7	6,950	6,950	11,000	2,860	7.63	7.63	9.62	4.90	388.0	388.0	7.10	7.10
	35	24	18.0	162.60	128.0	9,110	9,110	14,400	3,790	7.49	7.49	9.42	4.83	519.0	519.0	7.45	7.45

- Note**
- The Hot-rolled sections listed in this table are rolled at specific intervals determined by Siam Yamato Steel.
 - Contact us for product availability, rolling frequency and other pertinent information.

STEEL SHEET PILES

(Grade SY295 or SY390)



JIS A 5528 : 2006, 2012 | JIS STANDARD

Section	Dimensions					Sectional Area per pile	Weight		Moment of Inertia		Section Modulus	
	w _e	w _o	h _e	h _o	t		per pile	per wall width	per pile	per wall width	per pile	per wall width
	mm	mm	mm	mm	mm	cm ²	kg/m	kg/m ²	cm ⁴	cm ⁴ /m	cm ³	cm ³ /m
SP-II	400	437.5	100	122.5	10.5	61.18	48.0	120.0	1,240.0	8,740	152.0	874.0
SP-III A	400	437.5	150	170	13.1	74.40	58.4	146.0	2,790.0	22,800	250.0	1,520.0
SP-III	400	439	125	149	13.0	76.42	60.0	150.0	2,220.0	16,800	223.0	1,340.0
SP-IV	400	443	170	193.5	15.5	96.99	76.1	190.0	4,670.0	38,600	362.0	2,270.0

Note

- Weight per linear length of wall is rounded off using the JIS Z 8401 - specified formula : $\frac{\text{Weight per section}}{w (\text{effective width})} \times 1,000$
- The Hot - rolled sections listed in this table are rolled at specific intervals determined by Siam Yamato Steel.
- Contact us for product availability, rolling frequency and other pertinent information.

TOLERANCES

JIS A 5528 : 2006, 2012
HOT ROLLED STEEL SHEET PILE "U" SHAPE

Dimension		Tolerance
Height		±4%
Width (W _o)		+10 -5
Thickness	t < 10	± 1.0
	10 ≤ t < 16	± 1.2
	t ≥ 16	± 1.5
Length (L)		+Not Specified 0
Deflection	L ≤ 10 m.	Full Length (M) x 0.12% max.
	L > 10 m.	Full Length - 10 m. x 0.10% + 12 mm. max.
Camber	L ≤ 10 m.	Full Length (M) x 0.25% max.
	L > 10 m.	Full Length - 10 m. x 0.20% + 25 mm. max.
Difference in Vertically Cut Sections		Within 4% of Width

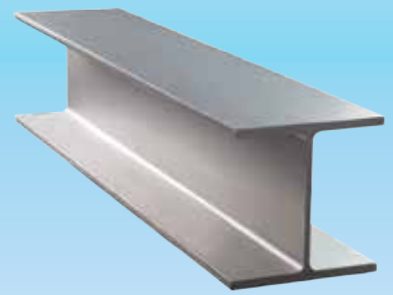
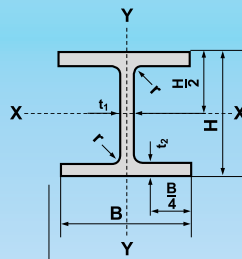
Note

- The deflection shall be in the direction parallel to the sheet pile wall and the camber shall be in the direction vertical to the sheet pile wall

H-BEAMS

JIS G 3192 : 1994

JIS STANDARD

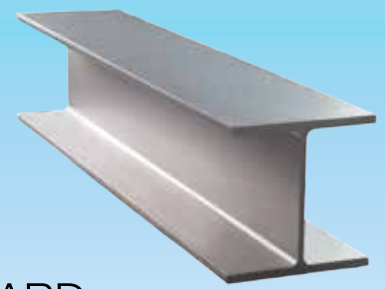
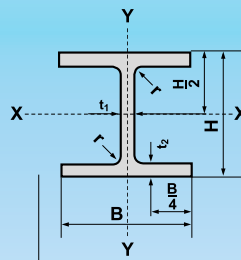


Nominal Size	Weight	Sectional Dimension					Sectional Area	Moment of Inertia		Radius of Gyration		Modulus of Section	
		H	B	t ₁	t ₂	r		I _x	I _y	i _x	i _y	Z _x	Z _y
mm	kg/m	mm	mm	mm	mm	mm	cm ²	cm ⁴	cm ⁴	cm	cm	cm ³	cm ³
100x50	9.3	100	50	5.0	7	8	11.85	187	14.8	3.98	1.12	37.5	5.91
100x100	16.9	100	100	6.0	8	8	21.59	378	134	4.2	2.49	76	27
125x125	23.6	125	125	6.5	9	8	30.00	839	293	5.3	3.13	134	47
150x75	14.0	150	75	5.0	7	8	17.85	666	50	6.1	1.66	89	13
150x100	20.7	148	100	6.0	9	8	26.35	1,000	150	6.2	2.39	135	30
150x150	31.1	150	150	7.0	10	8	39.65	1,620	563	6.4	3.77	216	75
175x90	18.0	175	90	5.0	8	8	22.90	1,210	97.5	7.26	2.06	138	21.7
175x175	40.4	175	175	7.5	11	13	51.42	2,900	984	7.5	4.37	331	112
200x100	17.8	198	99	4.5	7	8	22.69	1,540	113	8.3	2.24	156	23
	20.9	200	100	5.5	8	8	26.67	1,810	134	8.2	2.24	181	27
200x150	29.9	194	150	6.0	9	8	38.11	2,630	507	8.3	3.65	271	68
200x200	49.9	200	200	8.0	12	13	63.53	4,720	1,600	8.6	5.02	472	160
	56.2	200	204	12.0	12	13	71.53	4,980	1,700	8.4	4.88	498	167
250x125	25.1	248	124	5.0	8	8	31.99	3,450	255	10.4	2.82	278	41
	29.0	250	125	6.0	9	8	36.97	3,960	294	10.4	2.82	317	47
250x175	43.6	244	175	7.0	11	13	55.49	6,040	984	10.4	4.21	495	112
250x250	71.8	250	250	9.0	14	13	91.43	10,700	3,650	10.8	6.32	860	292
	81.6	250	255	14.0	14	13	103.90	11,400	3,880	10.5	6.11	912	304
300x150	32.0	298	149	5.5	8	13	40.80	6,320	442	12.4	3.29	424	59
	36.7	300	150	6.5	9	13	46.78	7,210	508	12.4	3.29	481	68
300x200	55.8	294	200	8.0	12	13	71.05	11,100	1,600	12.5	4.75	756	160
300x300	83.4	294	302	12.0	12	13	106.30	16,600	5,510	12.5	7.20	1,130	365
	93.0	300	300	10.0	15	13	118.40	20,200	6,750	13.1	7.55	1,350	450
	105.0	300	305	15.0	15	13	133.40	21,300	7,100	12.6	7.30	1,420	466
350x175	41.2	346	174	6.0	9	13	52.45	11,000	791	14.5	3.88	638	91
	49.4	350	175	7.0	11	13	62.91	13,500	984	14.6	3.96	771	112
350x250	78.1	340	250	9.0	14	13	99.53	21,200	3,650	14.6	6.05	1,250	292
350x350	113.0	344	348	10.0	16	13	144.00	32,800	11,200	15.1	8.84	1,910	646
	135.0	350	350	12.0	19	13	171.90	39,800	13,600	15.2	8.89	2,280	776

H-BEAMS

JIS G 3192 : 1994

JIS STANDARD



Nominal Size	Weight	Sectional Dimension					Sectional Area	Moment of Inertia		Radius of Gyration		Modulus of Section	
		H	B	t ₁	t ₂	r		I _x	I _y	i _x	i _y	Z _x	Z _y
mm	kg/m	mm	mm	mm	mm	mm	cm ²	cm ⁴	cm ⁴	cm	cm	cm ³	cm ³
400x200	56.1	396	199	7.0	11	13	71.41	19,800	1,450	16.6	4.50	999	145
	65.4	400	200	8.0	13	13	83.37	23,500	1,740	16.8	4.56	1,170	174
400x300	105.0	390	300	10.0	16	13	133.20	37,900	7,200	16.9	7.35	1,940	480
400x400	140.0	388	402	15.0	15	22	178.50	49,000	16,300	16.6	9.55	2,520	809
	147.0	394	398	11.0	18	22	186.80	56,100	18,900	17.3	10.10	2,850	951
	172.0	400	400	13.0	21	22	218.70	66,600	22,400	17.5	10.10	3,330	1,120
	197.0	400	408	21.0	21	22	250.70	70,900	23,800	16.8	9.75	3,540	1,170
450x200	65.1	446	199	8.0	12	13	82.97	28,100	1,580	18.4	4.36	1,260	159
	74.9	450	200	9.0	14	13	95.43	32,900	1,870	18.6	4.43	1,460	187
450x300	121.0	440	300	11.0	18	13	153.90	54,700	8,110	18.9	7.26	2,490	540
500x200	77.9	496	199	9.0	14	13	99.29	40,800	1,840	20.3	4.31	1,650	185
	88.2	500	200	10.0	16	13	112.20	46,800	2,140	20.4	4.36	1,870	214
	102.0	506	201	11.0	19	13	129.30	55,500	2,580	20.7	4.46	2,190	256
500x300	111.0	482	300	11.0	15	13	141.20	58,300	6,760	20.3	6.92	2,420	450
	125.0	488	300	11.0	18	13	159.20	68,900	8,110	20.8	7.14	2,820	540
600x200	92.5	596	199	10.0	15	13	117.80	66,600	1,980	23.8	4.10	2,240	199
	103.0	600	200	11.0	17	13	131.70	75,600	2,270	24.0	4.16	2,520	227
	118.0	606	201	12.0	20	13	149.80	88,300	2,720	24.3	4.26	2,910	270
600x300	133.0	582	300	12.0	17	13	169.20	98,900	7,660	24.2	6.73	3,400	511
	147.0	588	300	12.0	20	13	187.20	114,000	9,010	24.7	6.94	3,890	601
	170.0	594	302	14.0	23	13	217.10	134,000	10,600	24.8	6.98	4,500	700
700x300	163.0	692	300	13.0	20	18	207.50	168,000	9,020	28.5	6.59	4,870	601
	182.0	700	300	13.0	24	18	231.50	197,000	10,800	29.2	6.83	5,640	721
800x300	188.0	792	300	14.0	22	18	239.50	248,000	9,920	32.2	6.44	6,270	661
	207.0	800	300	14.0	26	18	263.50	286,000	11,700	33.0	6.67	7,160	781
900x300	210.0	890	299	15.0	23	18	266.90	339,000	10,300	35.6	6.20	7,610	687
	240.0	900	300	16.0	28	18	305.80	404,000	12,600	36.4	6.43	8,990	842
	283.0	912	302	18.0	34	18	360.10	491,000	15,700	36.9	6.59	10,800	1,040