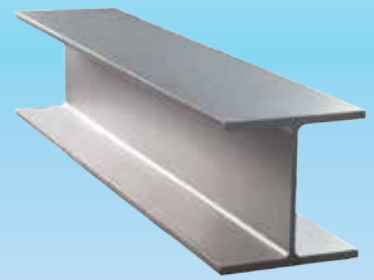
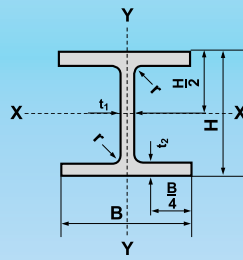


# H-BEAMS

EN 53 : 1962, EN 19 :1957 EN STANDARD



EURONORM Size	Weight kg/m	Sectional Dimension					Sectional Area cm <sup>2</sup>	Moment of Inertia		Radius of Gyration		Modulus of Section	
		H mm	B mm	t <sub>1</sub> mm	t <sub>2</sub> mm	r mm		I <sub>x</sub> cm <sup>4</sup>	I <sub>y</sub> cm <sup>4</sup>	i <sub>x</sub> cm	i <sub>y</sub> cm	Z <sub>x</sub> cm <sup>3</sup>	Z <sub>y</sub> cm <sup>3</sup>
IPE 100	8.1	100	55	4.1	5.7	7	10.3	171	15.9	4.07	1.24	34.2	5.8
*IPEAA100	6.7	97.6	55	3.6	4.5	7	8.6	136	12.6	3.98	1.21	27.9	4.6
*IPEA100	6.9	98.0	55	3.6	4.7	7	8.8	141	13.1	4.01	1.22	28.8	4.8
IPEAA 180	14.9	176	91	5.3	6.2	9	19.0	1,020	78.1	7.32	2.03	116	17.2
IPEA 180	15.4	177	91	4.3	6.5	9	19.6	1,063	81.9	7.37	2.05	120	18
IPE 180	18.8	180	91	4.3	8.0	9	23.9	1,317	101	7.42	2.05	146	22.2
IPE 200	22.4	200	100	5.6	8.5	12	28.5	1,943	142	8.26	2.24	194	29
IPEAA 200	18.0	196	100	4.5	6.7	12	22.9	1,533	112	8.19	2.21	156	22.4
IPEA 200	18.4	197	100	4.5	7.0	12	23.5	1,591	117	8.23	2.23	162	23.4
IPE 240	30.7	240	120	6.2	9.8	15	39.1	3,892	284	9.97	2.69	324	47
IPE 300	42.2	300	150	7.1	10.7	15	53.8	8,360	604	12.50	3.35	557	81
IPE 330	49.1	330	160	7.5	11.5	18	62.6	11,770	788	13.70	3.55	713	99
IPE 360	57.1	360	170	8.0	12.7	18	72.7	16,270	1,040	15.00	3.79	904	123
IPE 400	66.3	400	180	8.6	13.5	21	84.5	23,130	1,320	16.50	3.95	1,160	146
IPE 450	77.6	450	190	9.4	14.6	21	98.8	33,740	1,680	18.50	4.12	1,500	176
IPE 500	90.7	500	200	10.2	16.0	21	116.0	48,200	2,140	20.40	4.31	1,930	214
IPE 550	106.0	550	210	11.1	17.2	24	134.0	67,120	2,670	22.30	4.45	2,440	254
IPE 600	122.0	600	220	12.0	19.0	24	156.0	92,080	3,390	24.30	4.66	3,070	308
HE 100 B	20.4	100	100	6.0	10.0	12	26.0	450	167	4.16	2.53	90	34
HE 160 B	42.6	160	160	8.0	13.0	15	54.3	2,492	889	6.78	4.05	311	111
HE 180 B	51.2	180	180	8.5	14.0	15	65.3	3,831	1,363	7.66	4.57	426	151
HE 200 B	61.3	200	200	9.0	15.0	18	78.1	5,696	2,003	8.54	5.07	570	200
HE 260 B	93.0	260	260	10.0	17.5	24	118.0	14,920	5,130	11.20	6.58	1,150	395
HE 300 B	117.0	300	300	11.0	19.0	27	149.0	25,170	8,563	12.99	7.58	1,678	571
HE 320 B	127.0	320	300	11.5	20.5	27	161.0	30,820	9,240	13.80	7.57	1,930	616
HE 360 B	142.0	360	300	12.5	22.5	27	181.0	43,190	10,140	15.50	7.49	2,400	676
HE 400 B	155.0	400	300	13.5	24.0	27	198.0	57,680	10,820	17.10	7.40	2,880	721
HE 450 B	171.0	450	300	14.0	26.0	27	218.0	79,890	11,720	19.10	7.33	3,550	781
HE 500 B	187.0	500	300	14.5	28.0	27	239.0	107,200	12,620	21.20	7.27	4,290	842
HE 600 B	212.0	600	300	15.5	30.0	27	270.0	171,000	13,530	25.20	7.08	5,700	902
HE 100 A	16.7	96	100	5.0	8.0	12	21.2	349	134	4.06	2.51	73	27
HE 160 A	30.4	152	160	6.0	9.0	15	38.8	1,673	616	6.57	3.98	220	77
HE 180 A	35.5	171	180	6.0	9.5	15	45.3	2,510	925	7.45	4.52	294	103
HE 200 A	42.3	190	200	6.5	10.0	18	53.8	3,692	1,336	8.28	4.98	389	134
HE 260 A	68.2	250	260	7.5	12.5	24	86.8	10,450	3,670	11.00	6.50	836	282
HE 300 A	88.3	290	300	8.5	14.0	27	112.5	18,260	6,310	12.74	7.49	1,260	421
HE 320 A	97.6	310	300	9.0	15.5	27	124.0	22,930	6,990	13.60	7.49	1,480	466
HE 360 A	112.0	350	300	10.0	17.5	27	143.0	33,090	7,890	15.20	7.43	1,890	526
HE 400 A	125.0	390	300	11.0	19.0	27	159.0	45,070	8,564	16.84	7.34	2,311	571
HE 450 A	140.0	440	300	11.5	21.0	27	178.0	63,720	9,465	18.92	7.29	2,896	631
HE 500 A	155.0	490	300	12.0	23.0	27	197.5	86,970	10,370	21.00	7.24	3,550	691
HE 600 A	178.0	590	300	13.0	25.0	27	226.5	141,200	11,270	24.97	7.05	4,787	751

**Note**

- The Hot-rolled sections listed in this table are rolled at specific intervals determined by Siam Yamato Steel.
- Contact us for product availability, rolling frequency and other pertinent information.
- \* In accordance with Siam Yamato Steel(SYS) Standard



**SIAM YAMATO STEEL CO., LTD.**

1 Siam Cement Road, Bangsue,  
Bangkok, 10800, Thailand  
Tel : (662) 586-7777  
Fax : (662) 586-2687  
www.syssteel.com