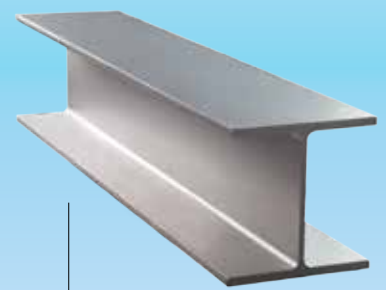
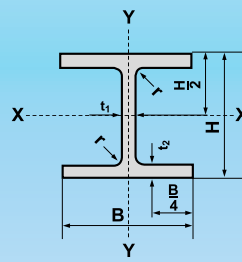


UNIVERSAL BEAMS



AS/NZS 3679.1 : 2010 AS/NZS STANDARD

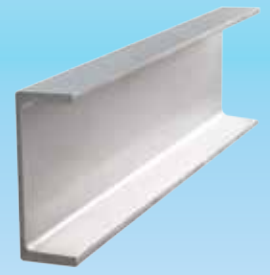
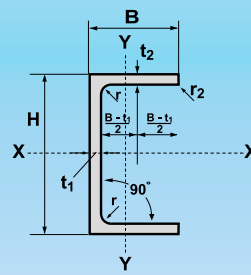
Nominal Size	Weight	Sectional Dimension					Sectional Area	Moment of Inertia		Radius of Gyration		Modulus of Section	
		H	B	t ₁	t ₂	r		I _x	I _y	i _x	i _y	Z _x	Z _y
	kg/m	mm	mm	mm	mm	mm	cm ²	cm ⁴	cm ⁴	cm	cm	cm ³	cm ³
150 UB	14.0	150.0	75	5.0	7.0	8.0	17.8	666	50	6.11	1.66	89	13
	18.0	155.0	75	6.0	9.5	8.0	23.0	905	67	6.28	1.71	117	18
180 UB	16.1	173.0	90	4.5	7.0	8.9	20.4	106	85	7.20	2.04	123	19.0
	18.1	175.0	90	5.0	8.0	8.9	23.0	121	98	7.26	2.06	139	21.7
	22.2	179.0	90	6.0	10.0	8.9	28.2	153	122	7.36	2.08	171	27.1
200 UB	18.2	198.0	99	4.5	7.0	11.0	23.2	1,580	114	8.26	2.21	160	23
	22.3	201.6	133	5.0	7.0	8.9	28.7	2,100	275	8.55	3.10	208	41
	25.4	203.2	133	5.8	7.8	8.9	32.3	2,360	306	8.54	3.08	232	46
	29.8	207.0	134	6.3	9.6	8.9	38.2	2,910	386	8.73	3.18	281	58
250 UB	25.7	248.0	124	5.0	8.0	12.0	32.7	3,540	255	10.40	2.79	285	41
	31.4	251.6	146	6.1	8.6	8.9	40.1	4,450	447	10.50	3.34	354	61
	37.3	256.2	146	6.4	10.9	8.9	47.5	5,570	566	10.80	3.45	435	78
310 UB	32.0	298.0	149	5.5	8.0	13.0	40.8	6,320	442	12.40	3.29	424	59
	40.4	304.0	165	6.1	10.2	11.4	52.1	8,640	765	12.90	3.83	569	93
	46.2	307.2	166	6.7	11.8	11.4	59.3	10,000	901	13.00	3.90	654	109
360 UB	44.7	352.0	171	6.9	9.7	11.4	57.2	12,100	810	14.60	3.76	689	95
	50.7	355.6	171	7.3	11.5	11.4	64.7	14,200	960	14.80	3.85	798	112
	56.7	358.6	172	8.0	13.0	11.4	72.4	16,100	1,100	14.90	3.90	899	128
410 UB	53.7	402.6	178	7.6	10.9	11.4	68.9	18,800	1,030	16.50	3.86	933	115
	59.7	406.4	178	7.8	12.8	11.4	76.4	21,600	1,210	16.80	3.97	1,060	135
460 UB	67.1	453.8	190	8.5	12.7	11.4	85.8	29,600	1,450	18.60	4.12	1,300	153
	74.6	457.4	190	9.1	14.5	11.4	95.2	33,500	1,660	18.80	4.18	1,460	175
	82.1	460.4	191	9.9	16.0	11.4	105.0	37,200	1,860	18.80	4.22	1,610	195
530 UB	82.0	528.2	209	9.6	13.2	14.0	105.0	47,700	2,010	21.30	4.38	1,810	193
	92.4	533.0	209	10.2	15.6	14.0	118.0	55,400	2,380	21.70	4.49	2,080	228
610 UB	101.0	602.0	228	10.6	14.8	14.0	130.0	76,100	2,930	24.20	4.75	2,530	257
	113.0	607.0	228	11.2	17.3	14.0	145.0	87,500	3,430	24.60	4.87	2,880	300
	125.0	611.6	229	11.9	19.6	14.0	160.0	98,600	3,930	24.90	4.96	3,230	343

UNIVERSAL COLUMNS

Nominal Size	Weight	Sectional Dimension					Sectional Area	Moment of Inertia		Radius of Gyration		Modulus of Section	
		H	B	t ₁	t ₂	r		I _x	I _y	i _x	i _y	Z _x	Z _y
	kg/m	mm	mm	mm	mm	mm	cm ²	cm ⁴	cm ⁴	cm	cm	cm ³	cm ³
100 UC	14.8	97.0	99	5.0	7.0	10.0	18.9	318	114	4.11	2.45	66	23
	23.4	152.4	152	6.1	6.8	8.9	29.8	1,260	398	6.51	3.66	166	52
150 UC	30.0	157.6	153	6.6	9.4	8.9	38.6	1,760	562	6.75	3.81	223	73
	37.2	161.8	154	8.1	11.5	8.9	47.3	2,220	701	6.84	3.85	274	91
200 UC	46.2	203.4	203	7.3	11.0	11.4	59.0	4,590	1,530	8.82	5.10	451	151
	52.2	206.4	204	8.0	12.5	11.4	66.6	5,280	1,770	8.91	5.15	512	174
	59.5	209.8	205	9.3	14.2	11.4	76.2	6,130	2,040	8.97	5.17	584	199
250 UC	72.9	253.8	254	8.6	14.2	14.0	93.2	11,400	3,880	11.10	6.45	897	306
	89.5	260.0	256	10.5	17.3	14.0	114.0	14,300	4,840	11.20	6.52	1,100	378
310 UC	96.8	308.0	305	9.9	15.4	16.5	124.0	22,300	7,290	13.40	7.67	1,450	478
	118.0	314.6	307	11.9	18.7	16.5	150.0	27,700	9,020	13.60	7.75	1,760	588
	137.0	320.6	309	13.8	21.7	16.5	175.0	32,900	10,700	13.70	7.82	2,050	691
	158.0	327.2	311	15.7	25.0	16.5	201.0	38,800	12,500	13.90	7.89	2,370	807

Note - The Hot-rolled sections listed in this table are rolled at specific intervals determined by Siam Yamato Steel.
 - Contact us for product availability, rolling frequency and other pertinent information.

PARALLEL FLANGE CHANNELS



AS/NZS 3679.1 : 2010 AS/NZS STANDARD

Nominal Size	Standard Sectional Dimension					Sectional Area	Weight	Moment of Inertia		Radius of Gyration		Modulus of Section	
	H	B	t ₁	t ₂	r			I _x	I _y	i _x	i _y	Z _x	Z _y
	mm	mm	mm	mm	mm	cm ²	kg/m	cm ⁴	cm ⁴	cm	cm	cm ³	cm ³
150 PFC	150	75	6.0	9.5	10	22.50	17.7	834	129	6.08	2.39	111	25.7
180 PFC	180	75	6.0	11.0	12	26.60	20.9	1,410	151	7.29	2.38	157	29.9
200 PFC	200	75	6.0	12.0	12	29.20	22.9	1,910	165	8.09	2.38	191	32.7
230 PFC	230	75	6.5	12.0	12	32.00	25.1	2,680	176	9.14	2.35	233	33.6
250 PFC	250	90	8.0	15.0	12	45.20	35.5	4,510	364	9.99	2.84	361	59.3
300 PFC	300	90	8.0	16.0	14	51.10	40.1	7,240	404	11.90	2.81	483	64.4

Note

- The Hot-rolled sections listed in this table are rolled at specific intervals determined by Siam Yamato Steel.
- Contact us for product availability, rolling frequency and other pertinent information.